



FLOOR

1

SUITE A

7,849 SF

- One-of-a-kind Creative Campus
- Newly Renovated
- Central, Vibrant Creative Neighborhood
- Fitness Center, Lounge, Outdoor Space
- Bauhaus Brewlabs & Dogwood Coffee On-site



FLOOR

1

SUITE B

3,074 SF

- One-of-a-kind Creative Campus
- Newly Renovated
- Central, Vibrant Creative Neighborhood
- Fitness Center, Lounge, Outdoor Space
- Bauhaus Brewlabs & Dogwood Coffee On-site



FLOORS

2

SUITE C

FLOOR 1 - 4,361 SF
FLOOR 2 - 3,309 SF

- One-of-a-kind Creative Campus
- Newly Renovated
- Central, Vibrant Creative Neighborhood
- Fitness Center, Lounge, Outdoor Space
- Bauhaus Brewlabs & Dogwood Coffee On-site

1331
TYLER ST NE

R2 COMPANIES

R2.ME



FLOOR

2

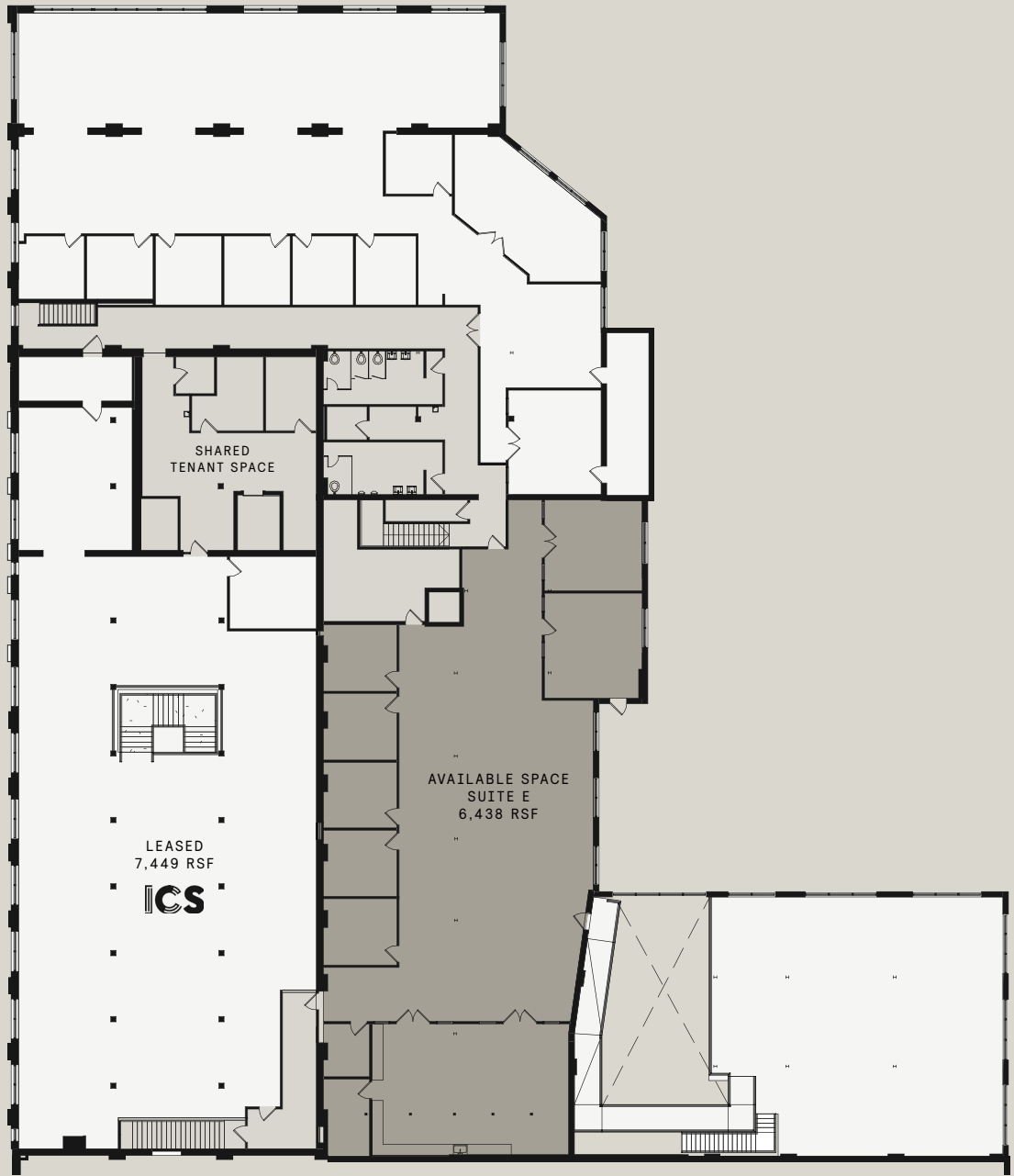
SUITE D

7,259 SF

- One-of-a-kind Creative Campus
- Newly Renovated
- Central, Vibrant Creative Neighborhood
- Fitness Center, Lounge, Outdoor Space
- Bauhaus Brewlabs & Dogwood Coffee On-site

MATT PISTORIO
+1 312 728 3619
MPISTORIO@R2.ME

CHAD BLIHOVDE
+1 612 554 8423
CBILHOVDE@R2.ME



FLOOR

2

SUITE E

6,438 SF

- One-of-a-kind Creative Campus
- Newly Renovated
- Central, Vibrant Creative Neighborhood
- Fitness Center, Lounge, Outdoor Space
- Bauhaus Brewlabs & Dogwood Coffee On-site