

1200 NB

Post-Industrial Creative Office

GOOSE ISLAND, CHICAGO

R
2
|
COMPANIES

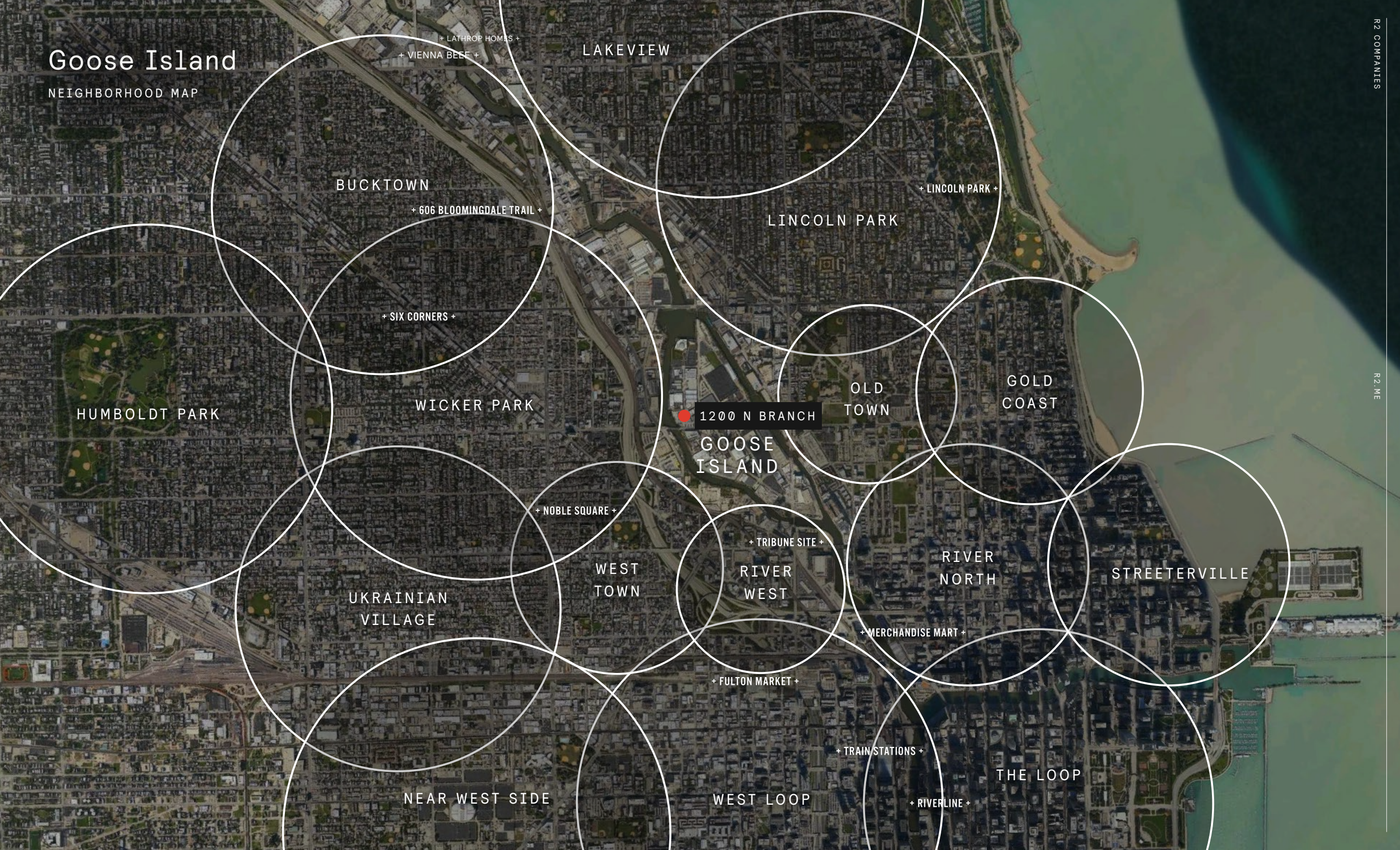


R2 COMPANIES

R2.ME

Goose Island

NEIGHBORHOOD MAP



Goose Island

LOCAL BUSINESS MAP



CORPORATE

- Echo Logistics
- Groupon
- CB2
- Watersaver
- Hogsalt
- Mars Wrigley
- Onni
- Sono East
- MxD Innovation Center
- Parker Restaurant Group
- Marshall
- Saffron Rails
- Lyft

RESIDENTIAL

- Onni Development
- Sono Towers
- NewCity
- 700 at the River District

FOOD & BEVERAGE

- California Pizza Kitchen
- Epic Burger
- Yolk
- Pizzeria Bebu
- Off Color Brewery
- Nando's
- Lyfe Kitchen
- Goddess & the Grocer
- Hogsalt
- Jerk
- Mod Pizza
- NYC Bagel Deli
- Roti

SHOPPING

- Whole Foods
- Perman Wine Selections
- REI
- Target
- Lululemon
- Boelter Kitchens

COFFEE

- Passion House
- Peet's Coffee

KEY BUILDINGS

- 1001 North Branch
- 1200 North Branch
- 1308 Elston
- 1315 North Branch
- Salt District



1200

NORTH BRANCH

1200 N NORTH BRANCH ST, SUITE 100
CHICAGO, ILLINOIS 60642

BUILDING FEATURES:

LOCATION: CHICAGO'S GOOSE ISLAND NEIGHBORHOOD
SIZE: 28,504 SF
FLOORS: 1
USE: CREATIVE OFFICE

1200 North Branch is a highly-improved 55,000 SF Creative Office development on a 3.5 acre site on the North Branch of the Chicago River. The property is located on Chicago's Goose Island.

LOCATION:

Intersection of North Branch Street and Division Street adjacent to the Division Street bridge – along the Chicago Riverfront.

FEATURES:

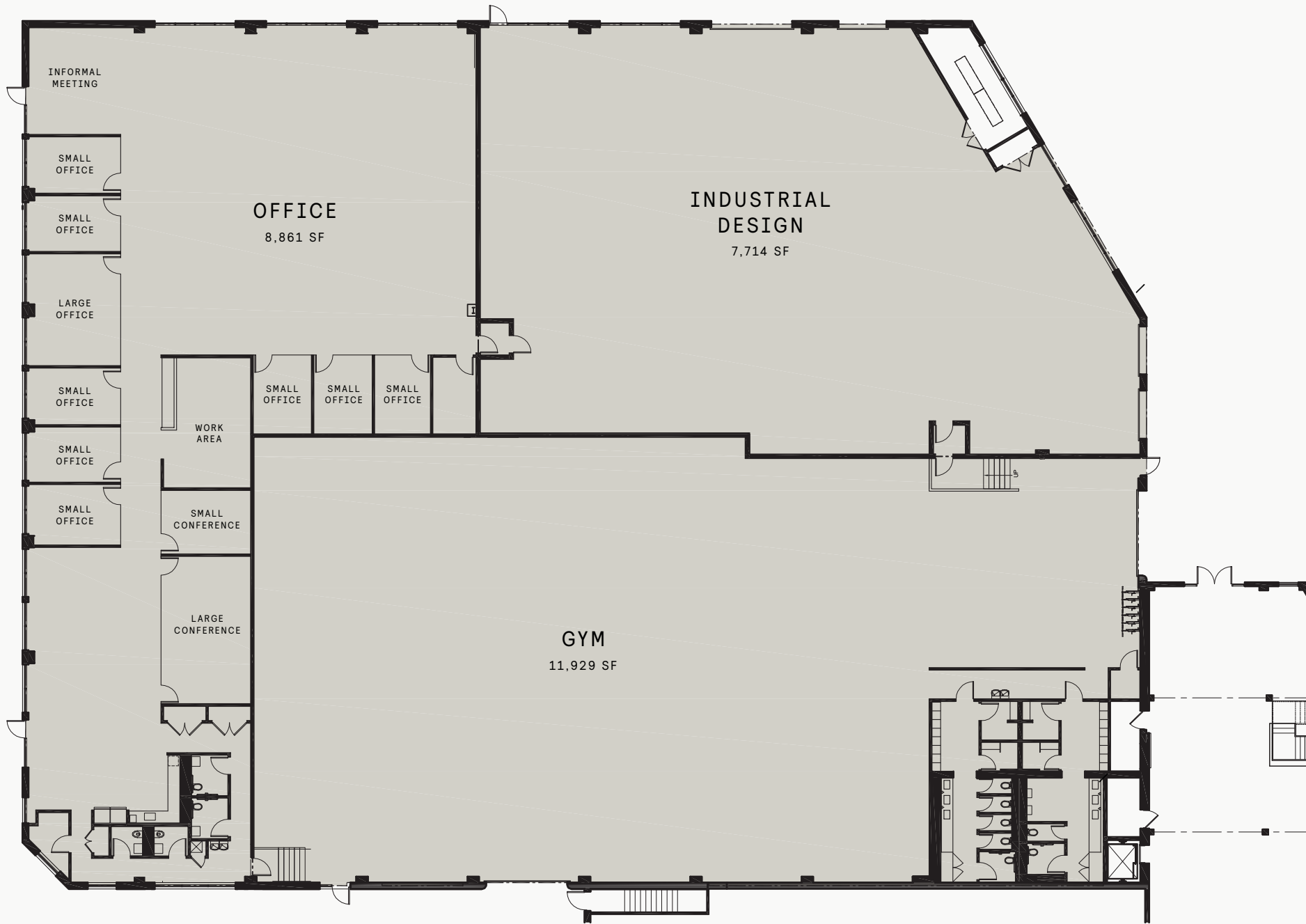
- Newly Built-Out Trophy Space
- Ample On-Site Parking
- Dedicated Entry
- Prominent Signage – Visibility from The Division Street Bridge & I90
- 25' Bow Truss Ceilings & New Skylights

Available Space

28,504 SF

FLOOR

1





—
1200 NB
Exterior



—
1200 NB
Interior Space





—
1200 NB
Small Offices

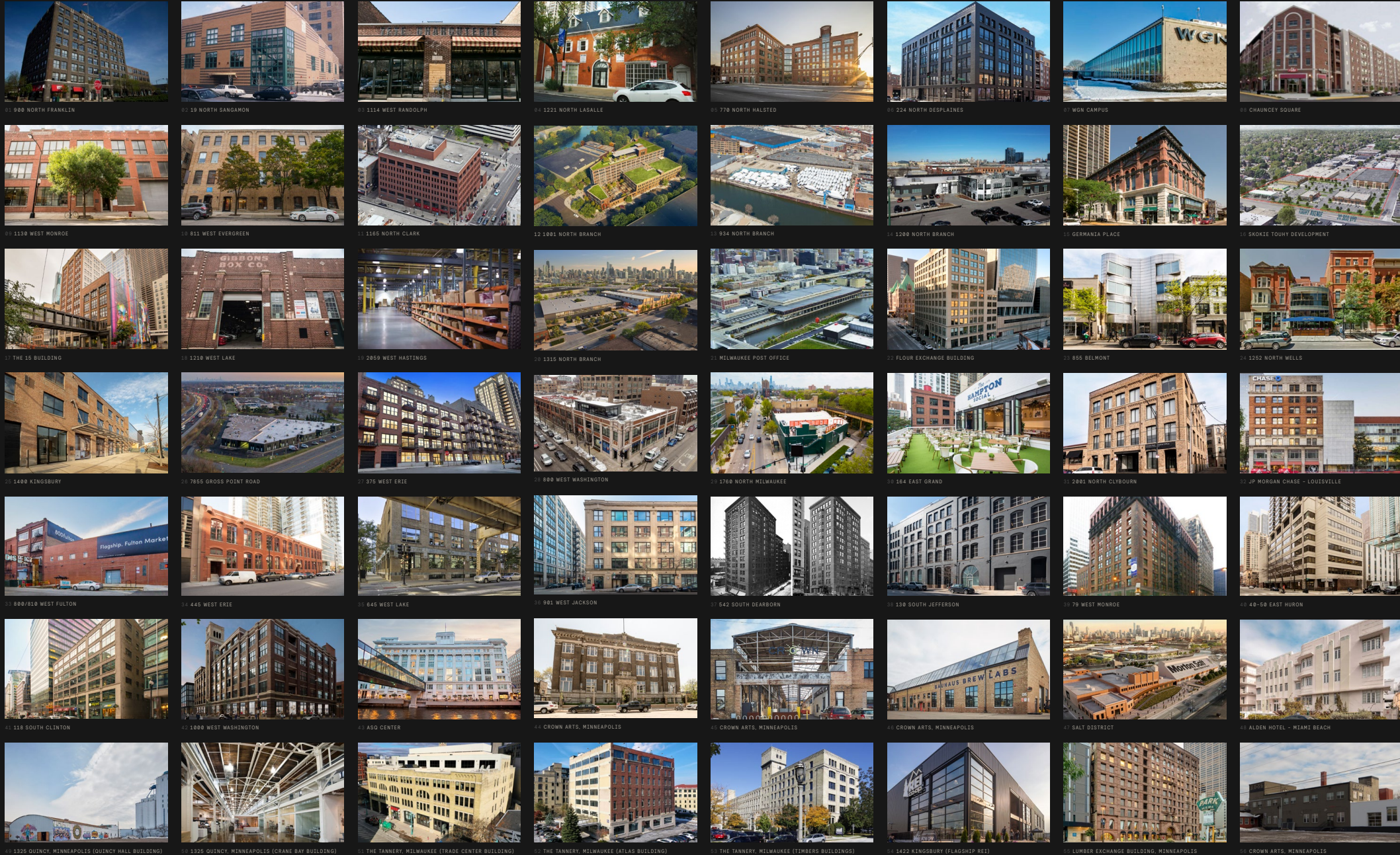




—
1200 NB
Fitness Center



—
1200 NB
Wood Shop



R2 Companies

BY THE NUMBERS

5.2M
Square Foot Portfolio

\$600M
Assets Under Management

+40 Assets
Currently Owned

3 Offices
Chicago, Milwaukee, Minneapolis

50+
R2 Operating Team

2007
Year Founded

In Relentless Pursuit of Opportunity.

R2 was created to source, acquire and uncover irreplaceable real estate in emerging and in-fill urban locations. R2 owns and operates over 6 million square feet across over 40 buildings and maintains offices in Chicago, Minneapolis & Milwaukee.

R2's vertically integrated platform is led by experienced Principals in Investment, Leasing, Asset Management, Property Management, Design & Construction. R2 has a multi-year track record of successfully repositioning Creative Office buildings across the Midwest.

For additional information, visit R2.ME

R
2
—