

1325 Quincy Street





1325 QUINCY STREET NE

BUILDING FEATURES:

Location:	NE Arts District; Minneapolis, MN
Size:	102,000 SF
Floors:	2 Stories
Parking Spaces:	3 per 1,000+
Ceiling Height:	32 ft Clear Height
Use:	Office, Retail & Entertainment

MINNEAPOLIS CREATIVE CAMPUS:

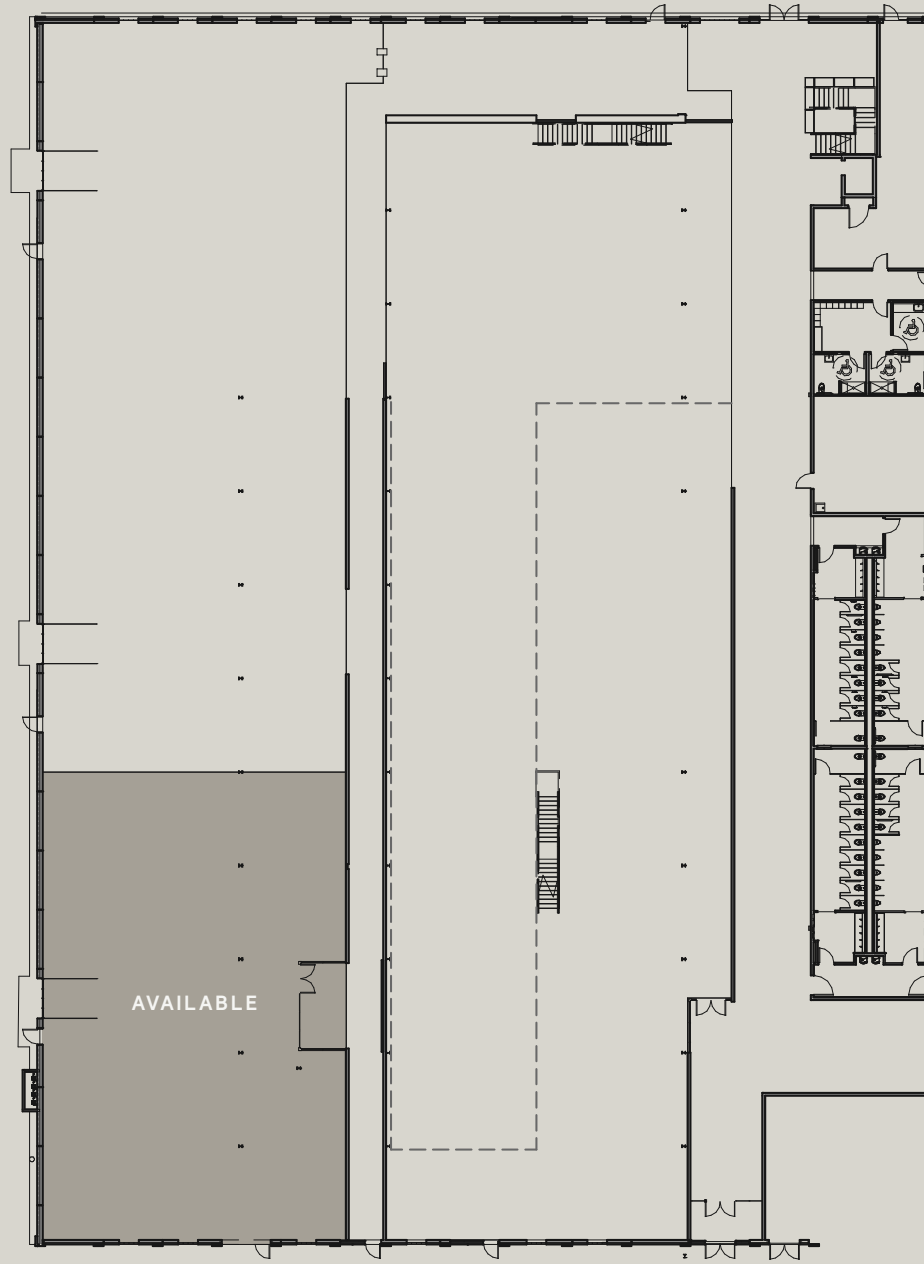
One-of-a-kind 102,000 square foot creative campus in the rapidly evolving Northeast Arts District.

CENTRAL LOCATION:

Located in the rapidly evolving Northeast Arts District in Minneapolis, home to BluDot Furniture, Sportsengine, Bauhaus Brewery, WORKSHOP, Able Seedhouse, Windmill Design, Rocket66 Software, Empire Coffee, Sociable Cider Werks, and many more unique minneapolis businesses.



1325 QUINCY STREET NE



GROUND FLOOR

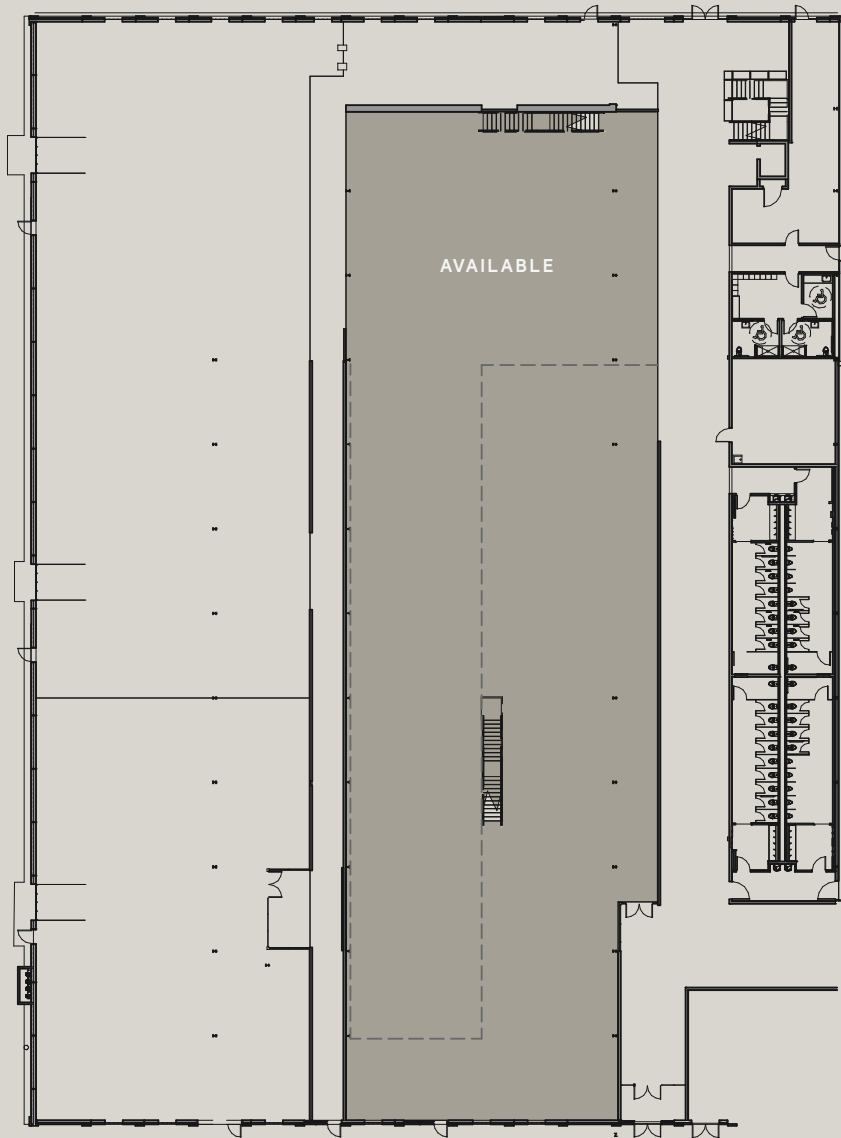
SUITE

A

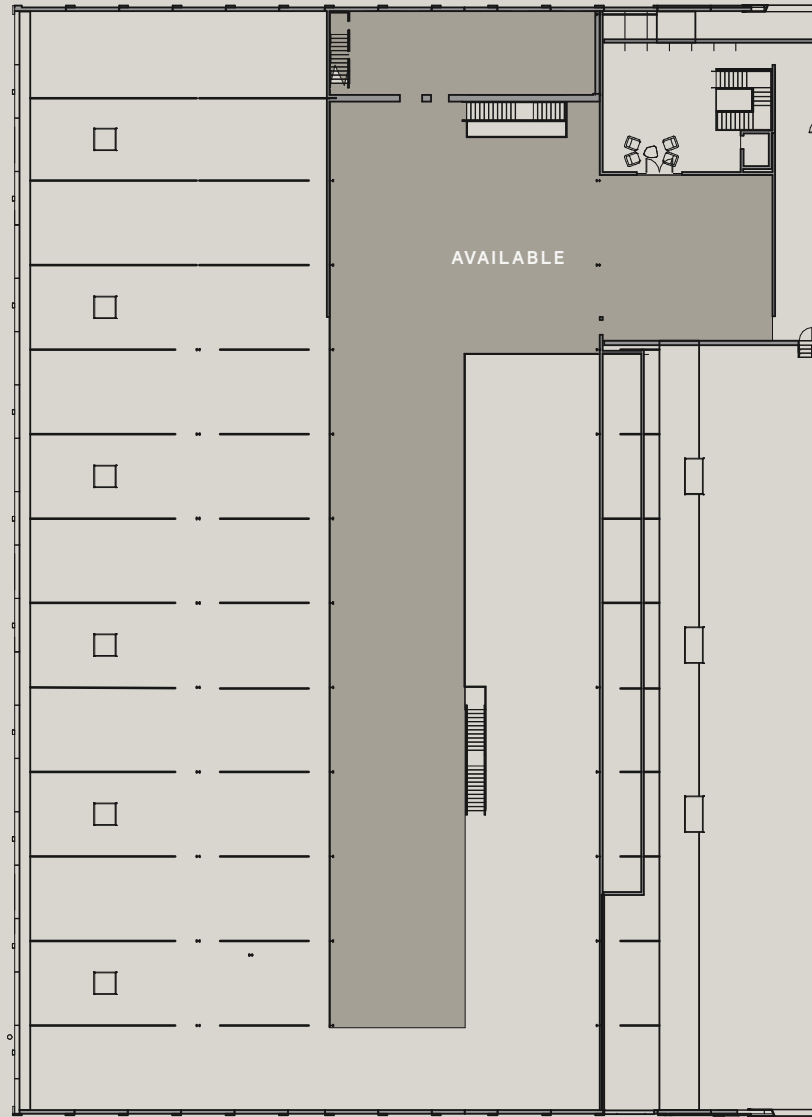
7,039 RSF

MATT PISTORIO
+1 312 728 3619
MPISTORIO@R2.ME

CHAD BLIHVDE
+1 612 554 8423
CBILHOVDE@R2.ME



GROUND FLOOR



SECOND FLOOR

SUITE

B

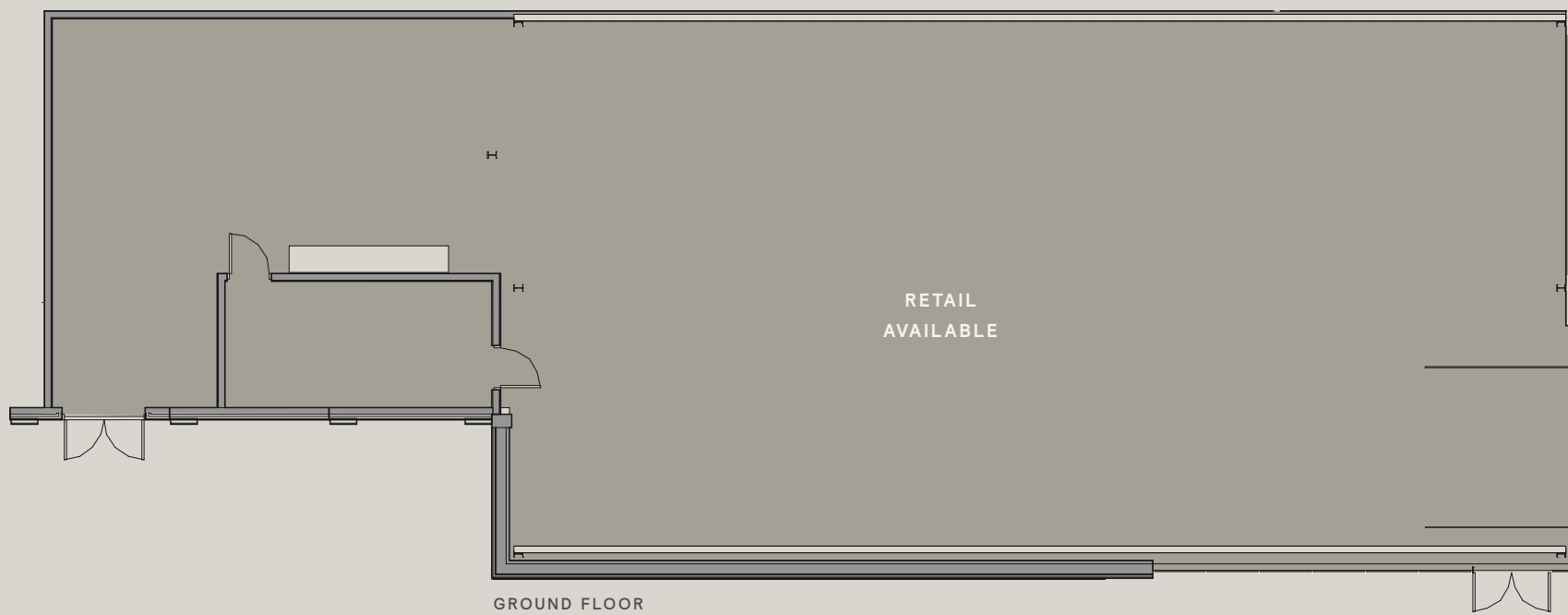
31,190 RSF

MATT PISTORIO
+1 312 728 3619
MPISTORIO@R2.ME

CHAD BLIHVDE
+1 612 554 8423
CBILHOVDE@R2.ME



1325 QUINCY STREET NE



GROUND FLOOR

RETAIL SUITE
FLOOR

1

5,132 RSF

MATT PISTORIO
+1 312 728 3619
MPISTORIO@R2.ME

CHAD BLIHVDE
+1 612 554 8423
CBILHOVDE@R2.ME









In Relentless Pursuit of Opportunity.

R2 was created to source, acquire and uncover irreplaceable real estate in emerging and in-fill urban locations. R2 owns and operates over 6 million square feet across over 40 buildings and maintains offices in Chicago, Minneapolis & Milwaukee.

R2's vertically integrated platform is led by experienced Principals in Investment, Leasing, Asset Management, Property Management, Design & Construction. R2 has a multi-year track record of successfully repositioning Creative Office buildings across the Midwest.

For additional information, visit R2.ME.



900 North Franklin



19 North Sangamon



1114 West Randolph



1221 North LaSalle



770 North Halsted



224 North Desplaines



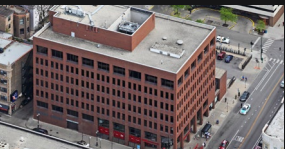
WGN Campus



1130 West Monroe



811 West Evergreen



1165 North Clark



909 West Bliss



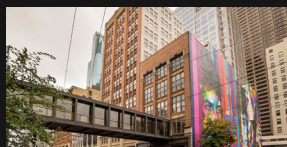
934 North Branch



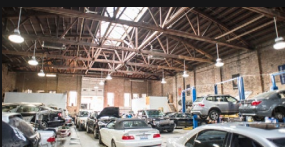
1200 North Branch



Germania Place



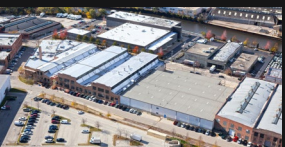
The 15 Building



1210 West Lake



2059 West Hastings



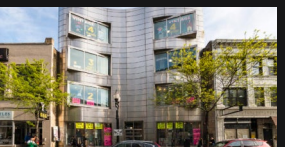
1315 North Branch



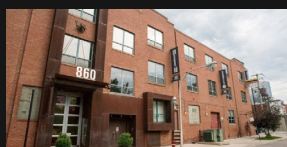
Milwaukee Post Office



Flour Exchange Building



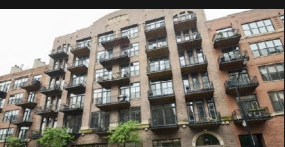
855 Belmont



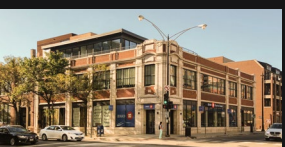
860 West Evergreen



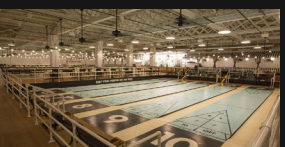
7855 Gross Point Road



375 West Erie



800 West Washington



1760 North Milwaukee



164 East Grand



2001 North Clybourn



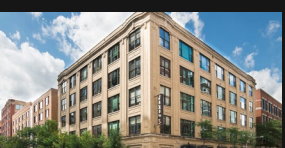
800/810 West Fulton



445 West Erie



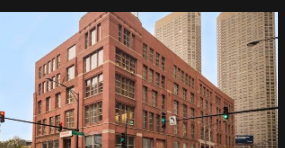
645 West Lake



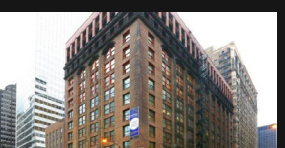
901 West Jackson



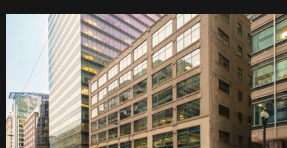
542 South Dearborn



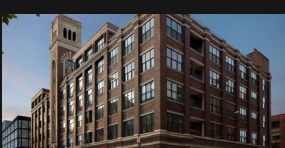
130 South Jefferson



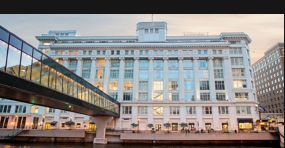
79 West Monroe



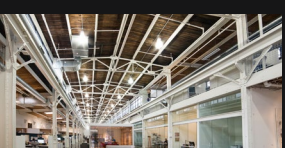
118 South Clinton



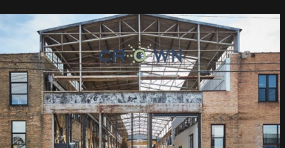
1000 West Washington



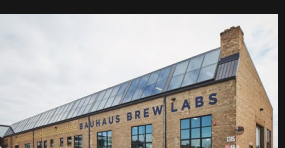
ASQ Center



Crown Center, Minneapolis



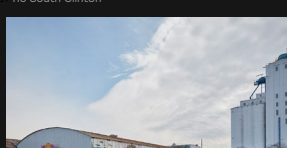
Crown Center, Minneapolis



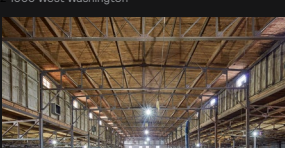
Crown Center, Minneapolis



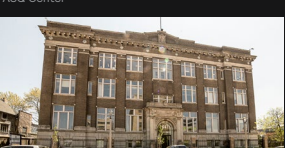
Salt District



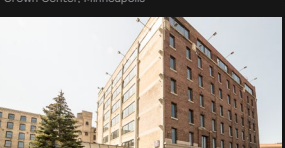
1325 Quincy, Minneapolis



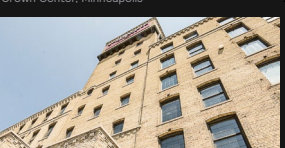
1325 Quincy, Minneapolis



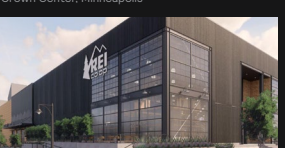
The Tannery, Milwaukee



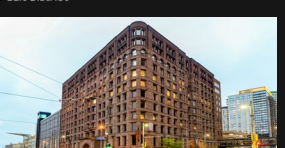
The Tannery, Milwaukee (Atlas Building)



The Tannery, Milwaukee



1422 Kingsbury (Flagship REI)



Lumber Exchange Building, Minneapolis

R2 Companies
By The Numbers

6.4M

Square Foot Portfolio

\$700M

Assets Under Management

+40 Assets

Currently Owned

3 Offices

Chicago, Milwaukee, Minneapolis

+10 Years

Management Team Experience

2007

Year Founded

R
2
|

R2 COMPANIES
1200 N NORTH BRANCH ST
CHICAGO, IL 60642
WWW.R2.ME

LEASING
MATT PISTORIO
+1 312 728 3619
MPISTORIO@R2.ME

CHAD BLIHVDE
+1 612 554 8423
CBILHOVDE@R2.ME