

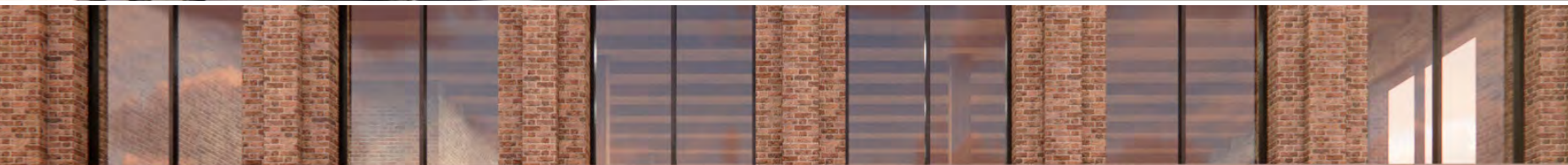
2001 CLYBOURN

Lincoln Park
Creative Loft Office

R
2
COMPANIES



R2 COMPANIES



—
2001 CLYBOURN
Exterior | Signage Opportunities

2001 N CLYBOURN

HEAVY TIMBER CREATIVE OFFICE LOCATED
IN THE HEART OF LINCOLN PARK.

SIZE: 25,000 RSF
STORIES: 4
AVAILABILITY: 4,412 RSF
RATE: Negotiable

FEATURES

- Prominent Clybourn-Facing Signage
- Two Car Dedicated Parking Garage
- Newly Sepc'd Move-In Ready
- Dedicated Entry
- New Lobby, Corridors & Common Areas

NEIGHBORHOOD

Located in Lincoln Park, one of
Chicago's most vibrant residential,
retail, and office neighborhoods.

MATT DUHIG
+1 312 300 2374
MDUHIG@R2.ME

Suite 100

4,412 SF



FLOOR

1

MATT DUHIG
 +1 312 300 2374
 MDUHIG@R2.ME



—
2001 CLYBOURN
Lobby



—
2001 CLYBURN
Available Space



—
2001 CLYBOURN
Available Space | Kitchen Area



—
2001 CLYBOURN
Exterior Rendering



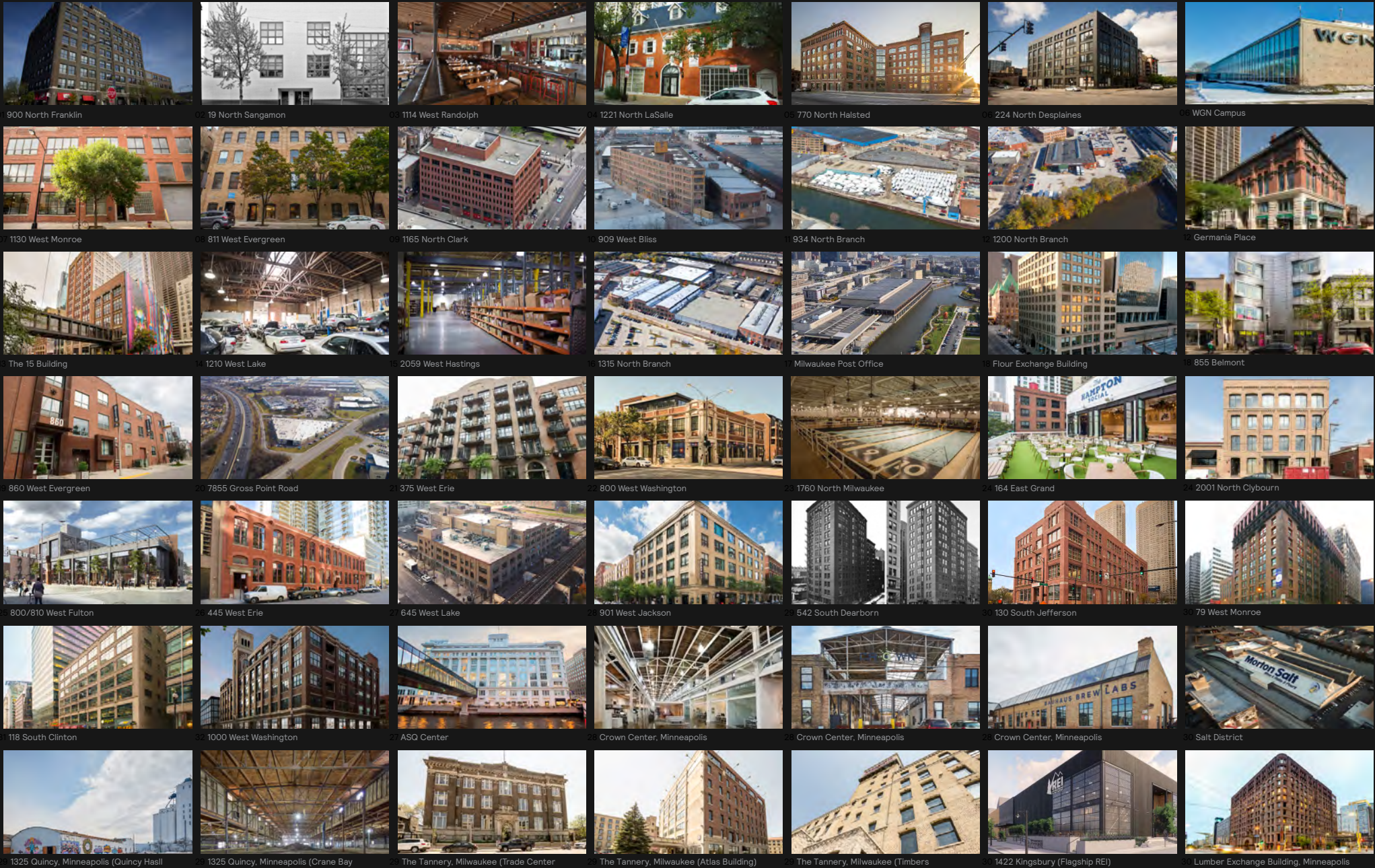
—
2001 CLYBOURN
Exterior Rendering | Lobby



—
2001 CLYBOURN
Exterior Rendering | Private Entry



—
2001 CLYBOURN
Building Mural



R2 Companies

BY THE NUMBERS

5.1M

Square Foot Portfolio

\$600M

Assets Under Management

+40 Assets

Currently Owned

3 Offices

Chicago, Milwaukee, Minneapolis

+10 Years

Management Team Experience

2007

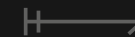
Year Founded

In Relentless Pursuit of Opportunity.

R2 was created to source, acquire and uncover irreplaceable real estate in emerging and in-fill urban locations. R2 owns and operates over 6 million square feet across over 40 buildings and maintains offices in Chicago, Minneapolis & Milwaukee.

R2's vertically integrated platform is led by experienced Principals in Investment, Leasing, Asset Management, Property Management, Design & Construction. R2 has a multi-year track record of successfully repositioning Creative Office buildings across the Midwest.

For additional information, visit [R2.me](https://r2.me).



R 2 |

R2 COMPANIES
1200 N NORTH BRANCH ST, FLR 2
CHICAGO, ILLINOIS 60642
R2.ME

LEASING

MATT DUHIG
+1 312 300 2374
MDUHIG@R2.ME

MATT PISTORIO
+1 847 924 3952
MPISTORIO@R2.ME