

50 East Huron Street

RIVER NORTH, CHICAGO





50 E Huron St

RIVER NORTH, CHICAGO

50 East Huron was constructed as a stand-alone national headquarters for the American Library Association, which the organization occupied through 2019. The building is approximately 40,000 square feet with a usable 10,000 square foot lower level and 6,000 square foot floorplates. The building benefits from natural-light from all sides offering all perimeter offices with natural light.

The building has been meticulously maintained with good existing office conditions. This is a great opportunity for a business looking for a turn-key value or can be renovated into Class A Creative Office space.

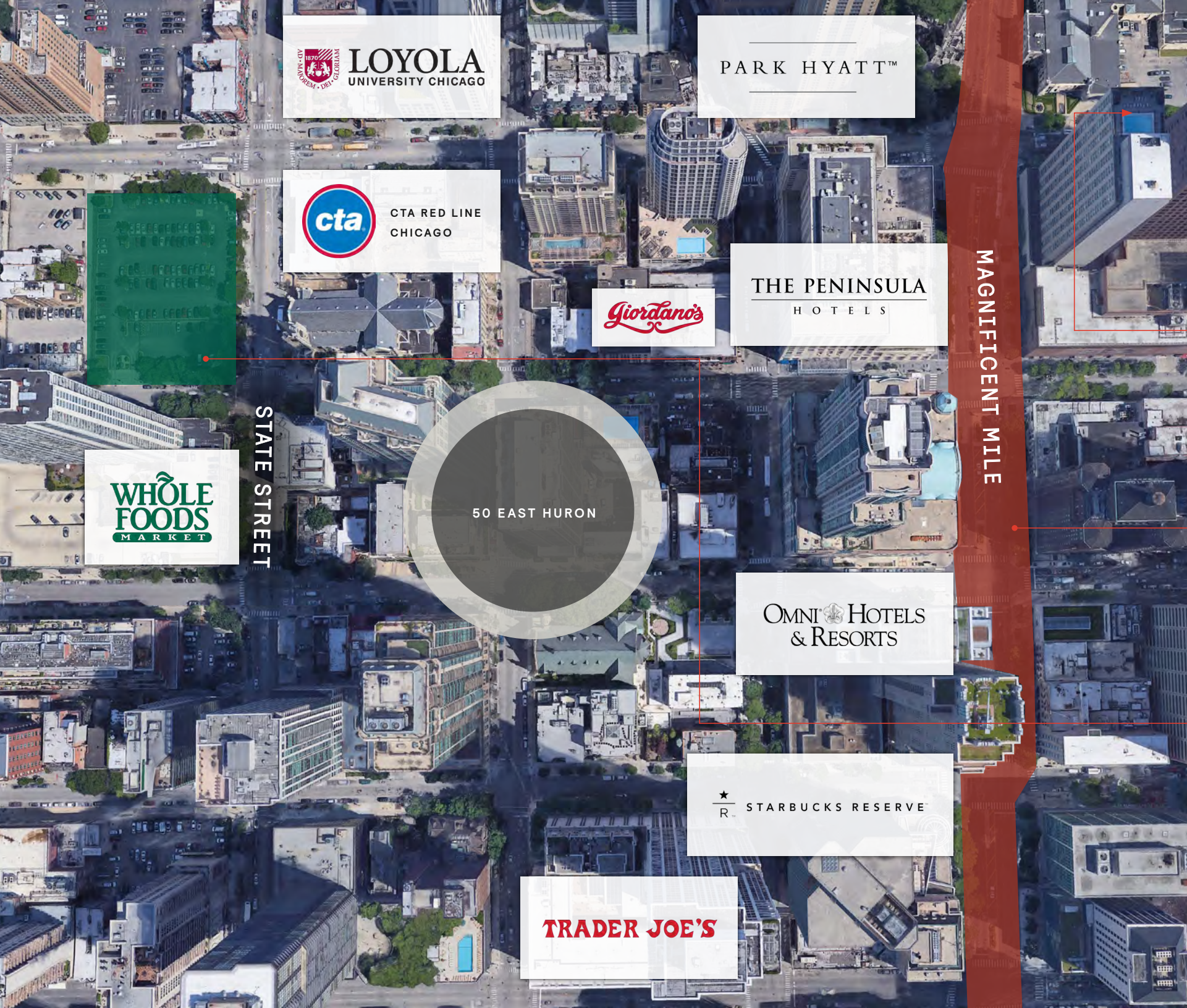
BUILDING FEATURES

BUILDING SIZE:	Approx. 40,000 SF
APPROX. FLOORPLATES:	6,000 SF Per Floor 10,000 SF Lower Level
CEILING HEIGHT:	11.5'

- 75+ existing offices – all with natural light
- Parking Available
- Dedicated Loading Dock

MATT DUHIG
312.300.2374
MDUHIG@R2.ME

MATT PISTORIO
312.728.3619
MPISTORIO@R2.ME



 **LOYOLA**
UNIVERSITY CHICAGO

PARK HYATT™

 CTA RED LINE
CHICAGO

THE PENINSULA
HOTELS

Giordano's

**WHOLE
FOODS**
MARKET

STATE STREET

50 EAST HURON

OMNI HOTELS
& RESORTS

 STARBUCKS RESERVE

TRADER JOE'S

MAGNIFICENT MILE

Location Map

50 E HURON ST

 Ann & Robert H. Lurie
Children's Hospital of Chicago®

 Northwestern
Medicine®

Northwestern
PRITZKER SCHOOL OF LAW

The Magnificent Mile®

MICHIGAN AVENUE • CHICAGO

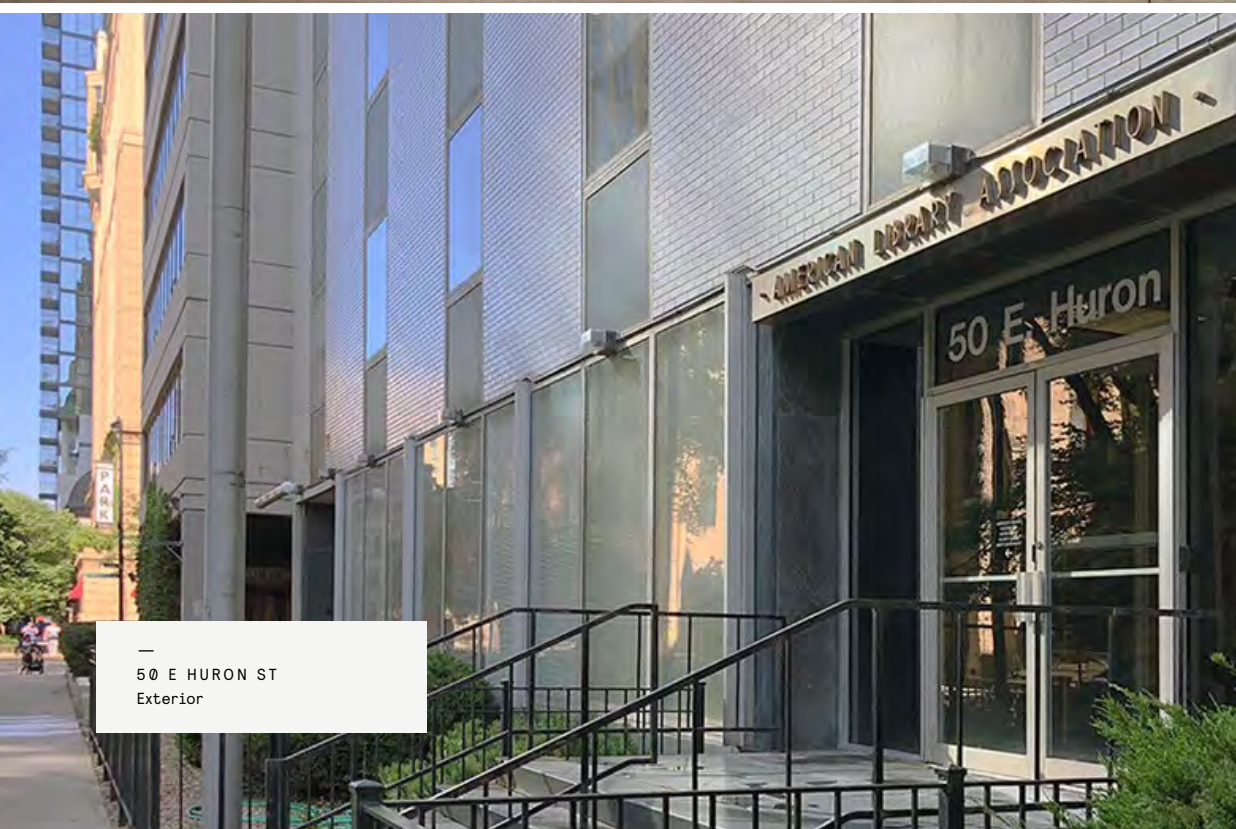
CHICAGO'S PREMIER
COMMERCIAL DISTRICT



 **WHOLE
FOODS** +  **LIFETIME
FITNESS**

ONE CHICAGO SQUARE

- 80 Condo Units
- 800 Class-A Apt Units
- Flagship Whole Foods Relocation
- Lifetime Fitness Center



—
50 E HURON ST
Exterior

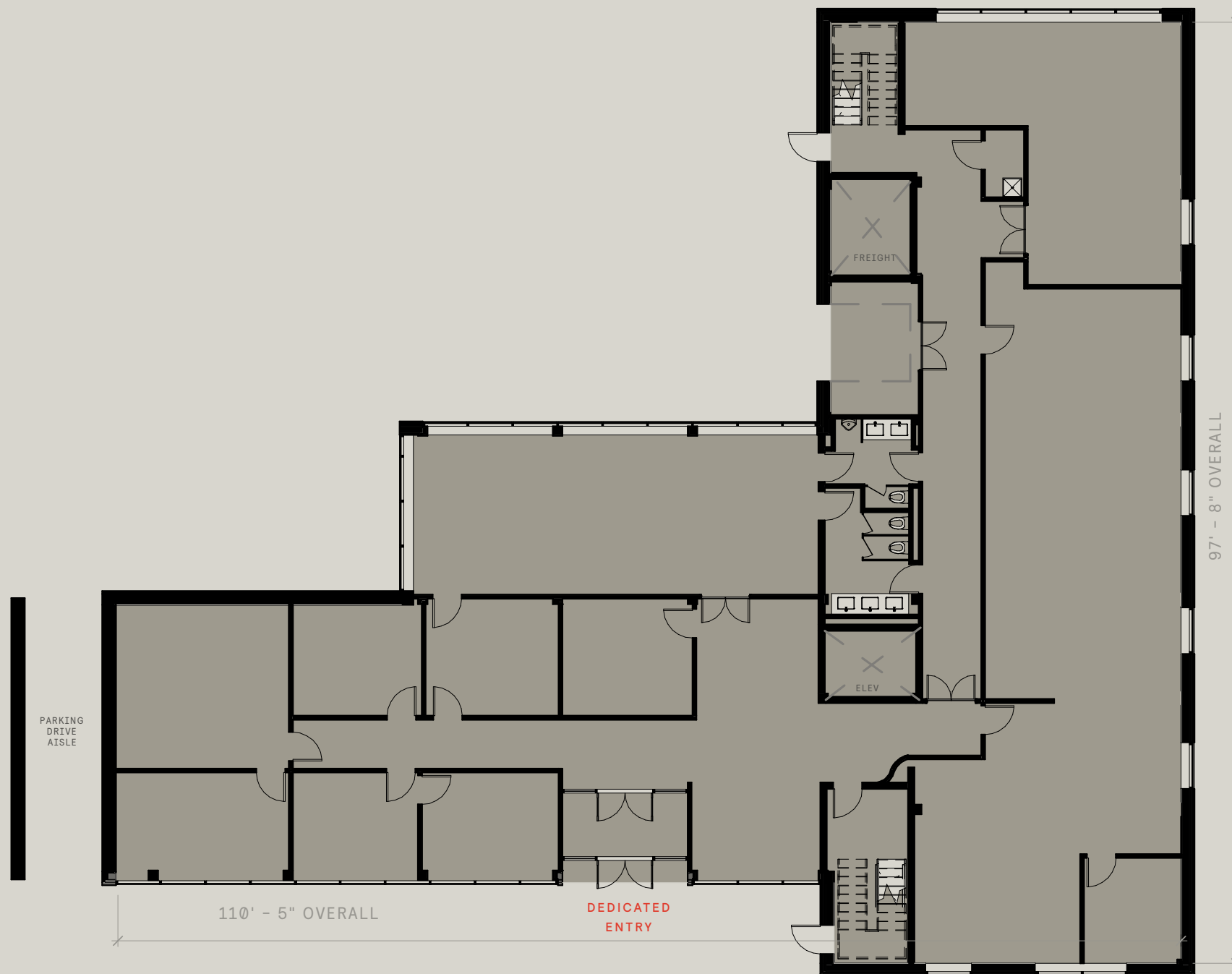


—
50 E HURON ST
Conference Room

Space Plan

50 E HURON ST

APPROX. 6,500 RSF



FLOOR

1

MATT DUHIG
312.300.2374
MDUHIG@R2.ME

MATT PISTORIO
312.728.3619
MPISTORIO@R2.ME

Space Plan

50 E HURON ST

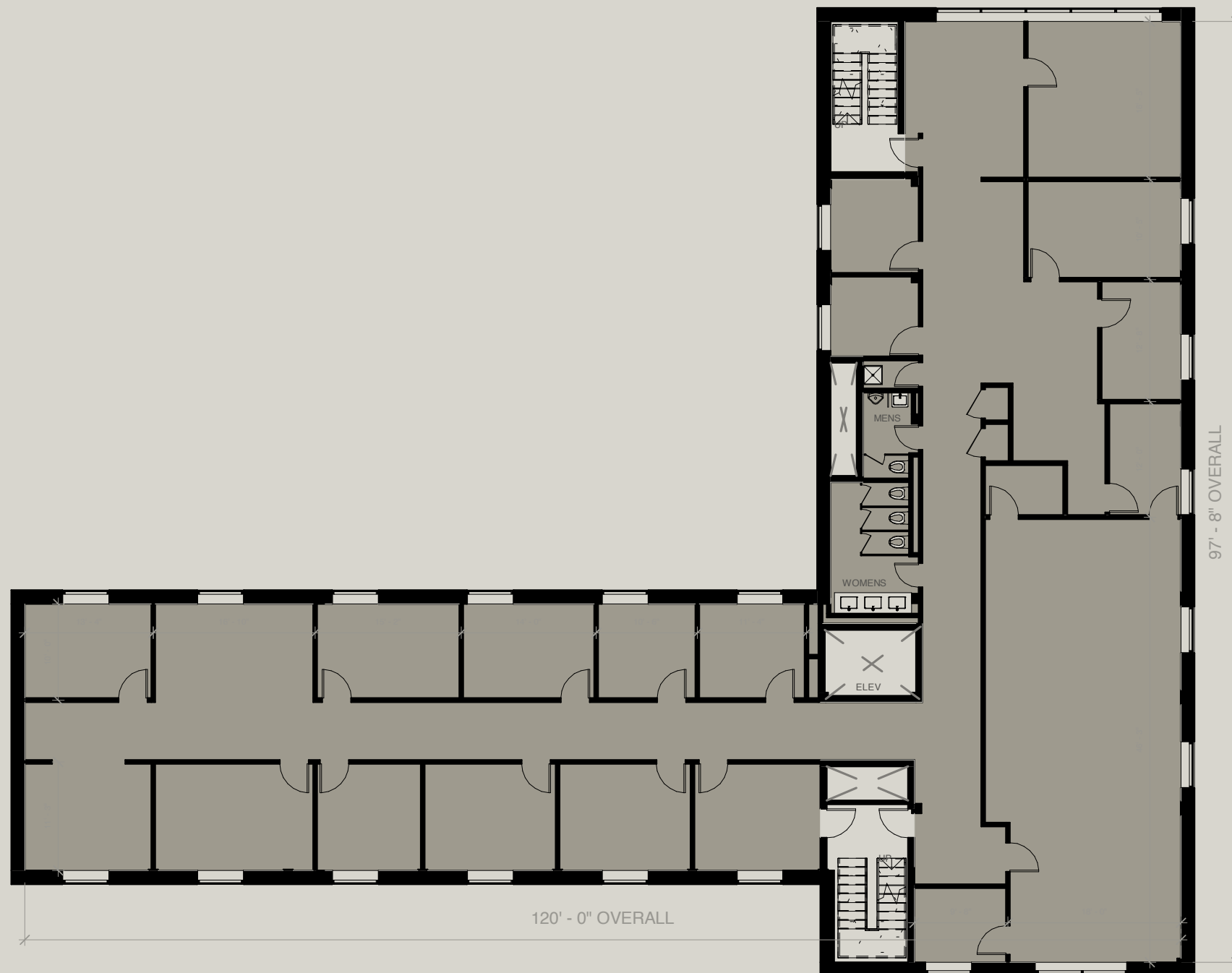
APPROX. 5,500 RSF

FLOOR

2

MATT DUHIG
312.300.2374
MDUHIG@R2.ME

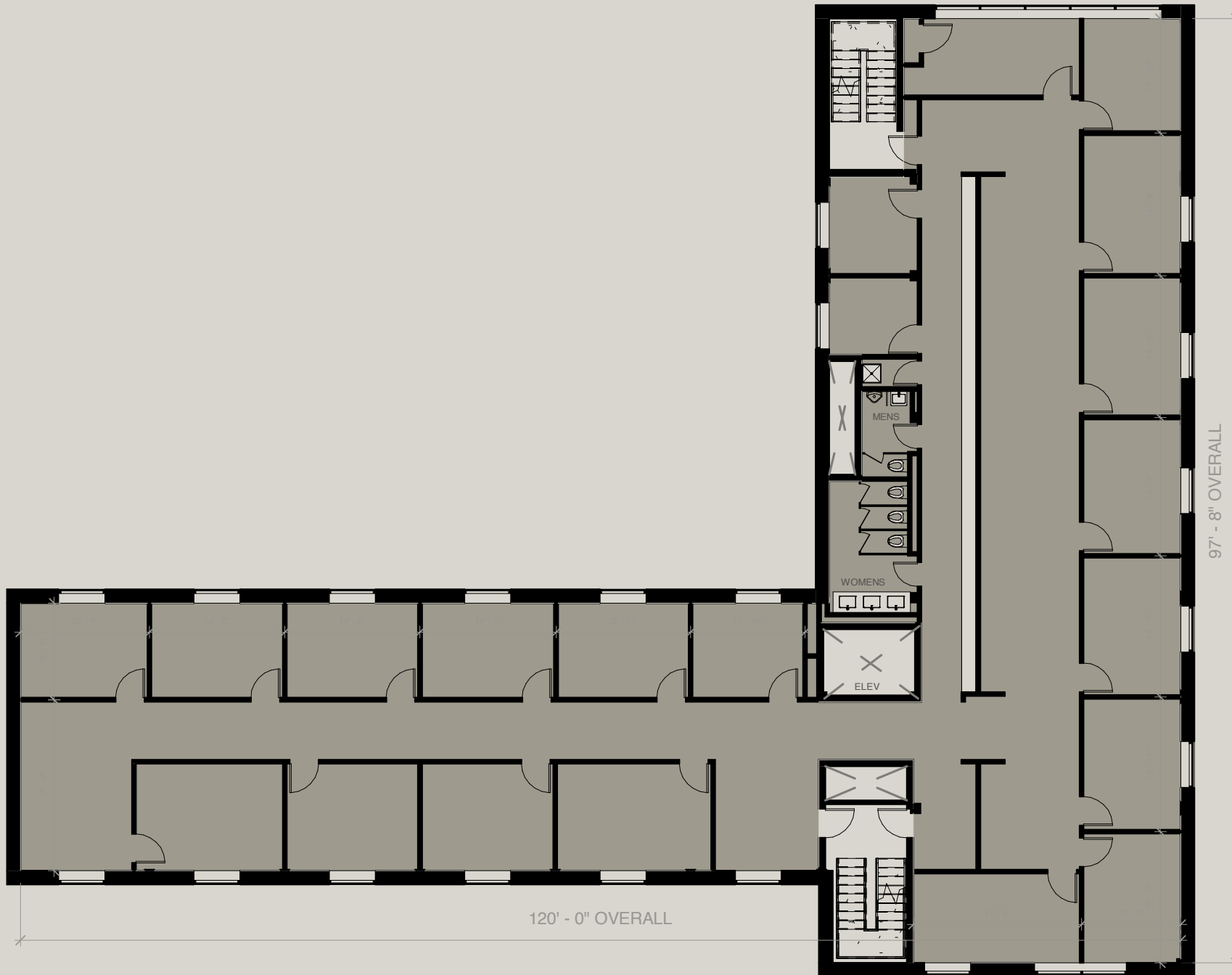
MATT PISTORIO
312.728.3619
MPISTORIO@R2.ME



Space Plan

50 E HURON ST

APPROX. 5,500 RSF



FLOOR

3

MATT DUHIG
312.300.2374
MDUHIG@R2.ME

MATT PISTORIO
312.728.3619
MPISTORIO@R2.ME

Space Plan

50 E HURON ST

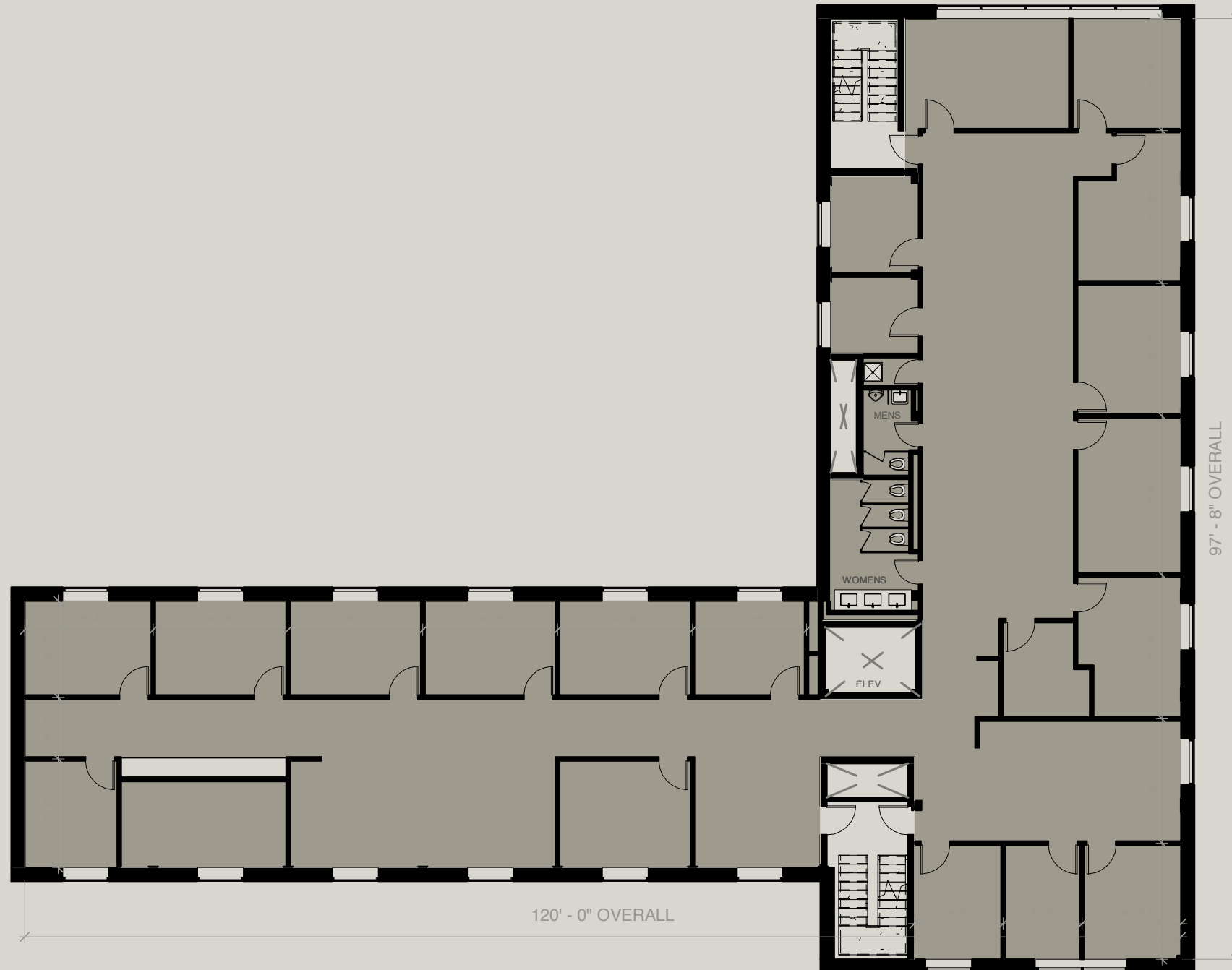
APPROX. 5,500 RSF

FLOOR

4

MATT DUHIG
312.300.2374
MDUHIG@R2.ME

MATT PISTORIO
312.728.3619
MPISTORIO@R2.ME



Space Plan

50 E HURON ST

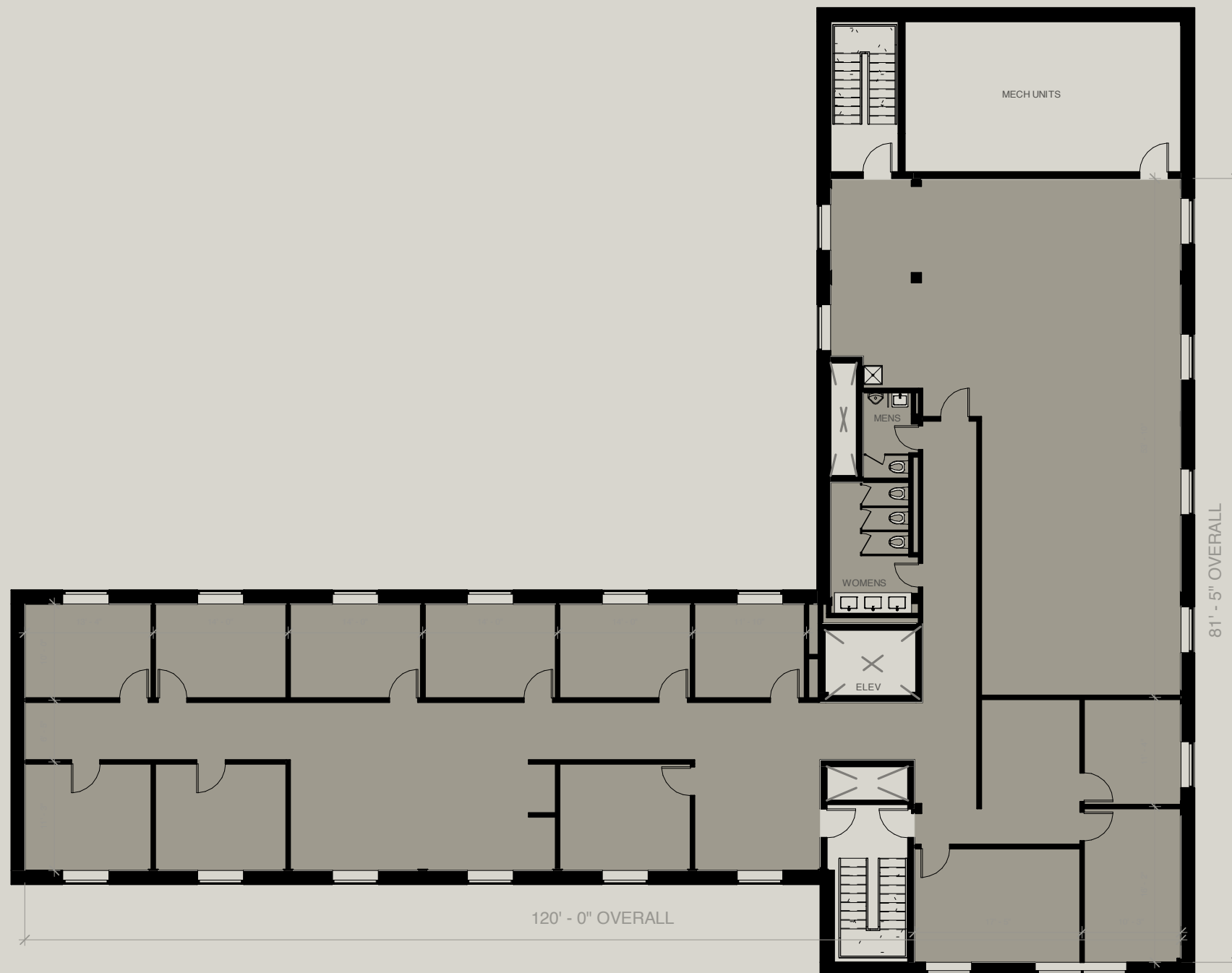
APPROX. 5,000 RSF

FLOOR

5

MATT DUHIG
312.300.2374
MDUHIG@R2.ME

MATT PISTORIO
312.728.3619
MPISTORIO@R2.ME



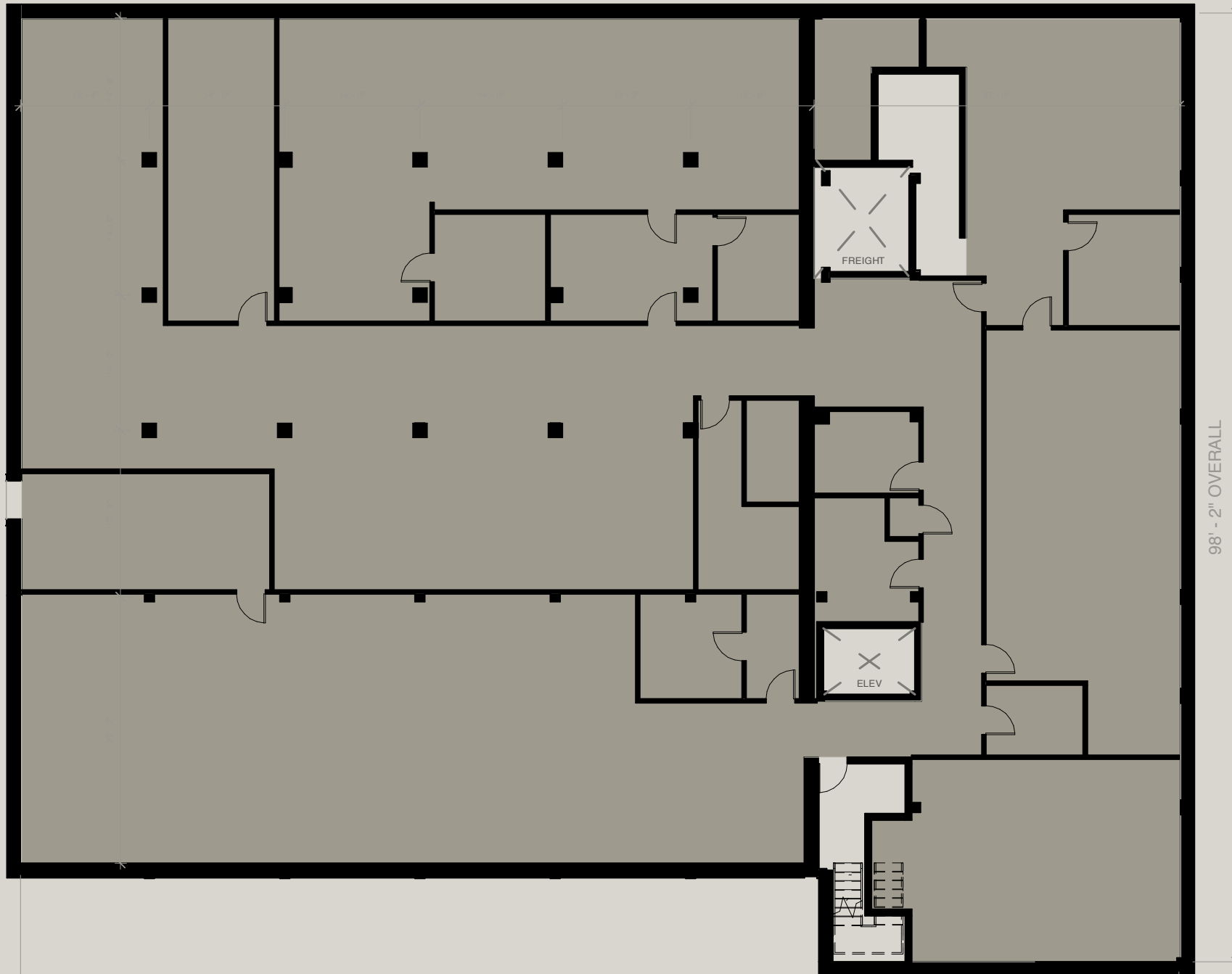
120' - 0" OVERALL

81' - 5" OVERALL

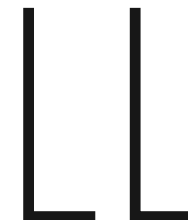
Space Plan

50 E HURON ST

APPROX. 10,500 RSF



FLOOR



MATT DUHIG
 312.300.2374
 MDUHIG@R2.ME

MATT PISTORIO
 312.728.3619
 MPISTORIO@R2.ME



01 900 NORTH FRANKLIN



02 19 NORTH SANGAMON



03 1114 WEST RANDOLPH



04 1221 NORTH LASALLE



05 770 NORTH HALSTED



06 224 NORTH DESPLAINES



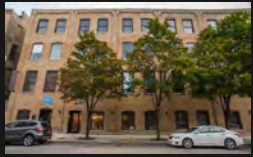
07 WGN CAMPUS



08 CHAUNCEY SQUARE



09 1130 WEST MONROE



10 811 WEST EVERGREEN



11 1185 NORTH CLARK



12 1001 NORTH BRANCH



13 934 NORTH BRANCH



14 1200 NORTH BRANCH



15 GERMANIA PLACE



16 SKOKIE TOUHY DEVELOPMENT



17 THE 15 BUILDING



18 1210 WEST LAKE



19 2059 WEST HASTINGS



20 1315 NORTH BRANCH



21 MILWAUKEE POST OFFICE



22 FLOUR EXCHANGE BUILDING



23 855 BELMONT



24 1262 NORTH WELLS



25 1400 KINGSBURY



26 7855 GROSS POINT ROAD



27 375 WEST ERIE



28 800 WEST WASHINGTON



29 1760 NORTH MILWAUKEE



30 164 EAST GRAND



31 2001 NORTH CLYBOURN



32 JP MORGAN CHASE - LOUISVILLE



33 800/810 WEST FULTON



34 445 WEST ERIE



35 640 WEST LAKE



36 901 WEST JACKSON



37 542 SOUTH DEARBORN



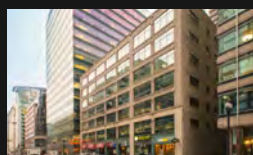
38 130 SOUTH JEFFERSON



39 79 WEST MONROE



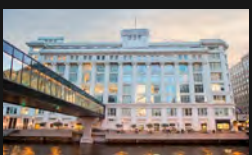
40 40-50 EAST HURON



41 118 SOUTH CLINTON



42 1000 WEST WASHINGTON



43 ASO CENTER



44 CROWN ARTS, MINNEAPOLIS



45 CROWN ARTS, MINNEAPOLIS



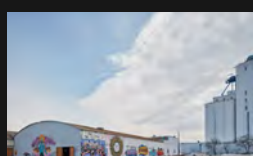
46 CROWN ARTS, MINNEAPOLIS



47 SALT DISTRICT



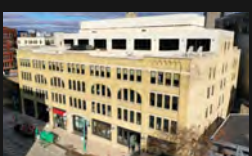
48 ALDEN HOTEL - MIAMI BEACH



49 1325 QUINCY, MINNEAPOLIS (QUINCY HALL BUILDING)



50 1325 QUINCY, MINNEAPOLIS (CRANE BAY BUILDING)



51 THE TANNERY, MILWAUKEE (TRADE CENTER BUILDING)



52 THE TANNERY, MILWAUKEE (ATLAS BUILDING)



53 THE TANNERY, MILWAUKEE (TIMBERS BUILDINGS)



54 1422 KINGSBURY (FLAGSHIP REI)



55 LUMBER EXCHANGE BUILDING, MINNEAPOLIS



56 CROWN ARTS, MINNEAPOLIS

R2 Companies

BY THE NUMBERS

5.2M

Square Foot Portfolio

\$600M

Assets Under Management

+40 Assets

Currently Owned

3 Offices

Chicago, Milwaukee, Minneapolis

50+

R2 Operating Team

2007

Year Founded

In Relentless Pursuit of Opportunity.

R2 was created to source, acquire and uncover irreplaceable real estate in emerging and in-fill urban locations. R2 owns and operates over 6 million square feet across over 40 buildings and maintains offices in Chicago, Minneapolis & Milwaukee.

R2's vertically integrated platform is led by experienced Principals in Investment, Leasing, Asset Management, Property Management, Design & Construction. R2 has a multi-year track record of successfully repositioning Creative Office buildings across the Midwest.

For additional information, visit R2.ME

R
2
—

R2 COMPANIES
1200 N NORTH BRANCH STREET
CHICAGO, ILLINOIS 60642
R2.ME

MATT DUHIG
312.300.2374
MDUHIG@R2.ME

MATT PISTORIO
312.728.3619
MPISTORIO@R2.ME