

1453 Maple St

EVANSTON, CHICAGO





1453 MAPLE ST.

IRREPLACEABLE OFFICE

One-of-a-kind Building – Perfect for Creative Office, Event Space or Gallery in the heart of Evanston.

8,134 - 31,210 RSF

CENTRAL LOCATION

Vibrant, amenity-rich Evanston city centre.

HISTORIC BUILDING

Constructed in 1928 by world-famous architect, the late John. A. Holabird.

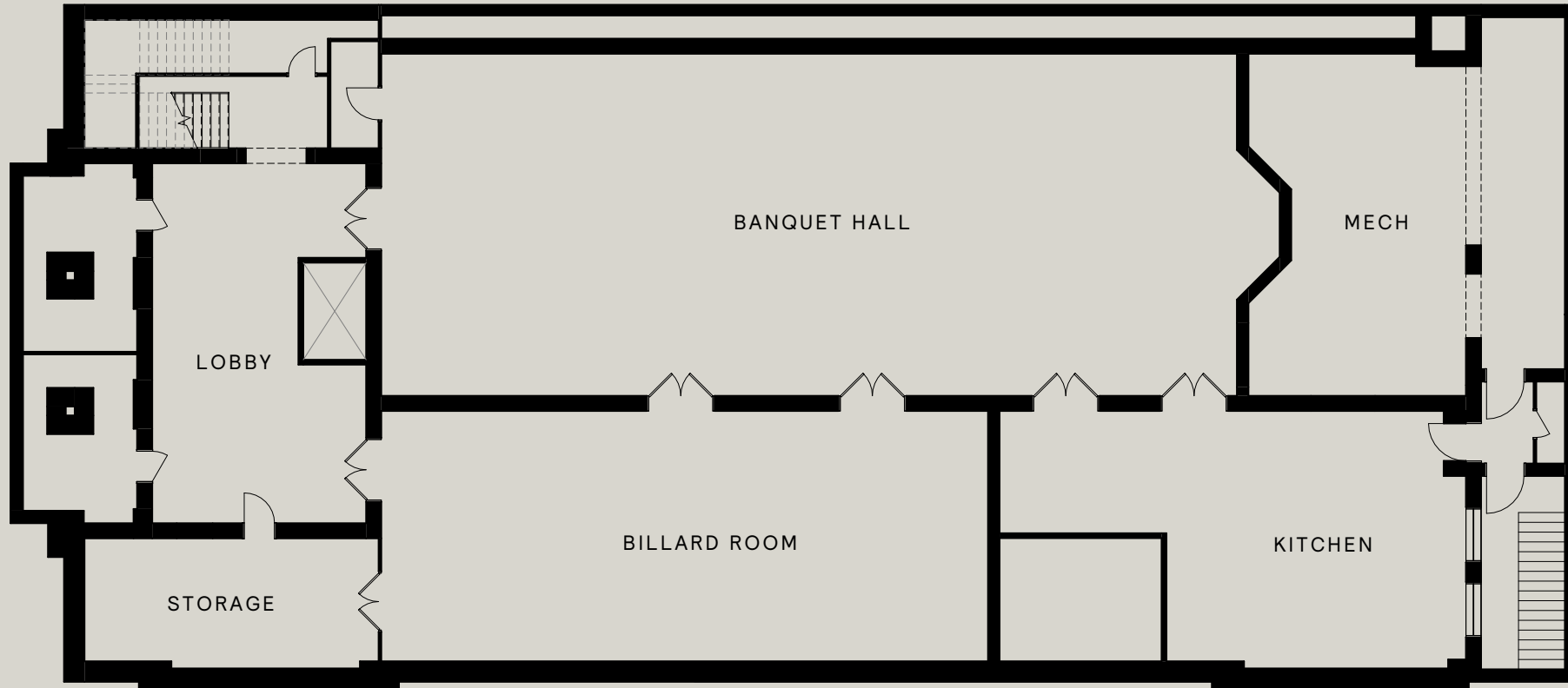
FEATURES

- One-of-a-kind Space – Perfect for Creative Office, Event Space or Gallery
- Spec'd to Move-in Ready Condition
- Grand Entry Columns
- Adaptive Reuse of 20th Century Masonic Temple
- Striking Classic Revival Architectural Details
- Two Open Plan Ballrooms on Separate Floors

1453 MAPLE ST.

R2 COMPANIES

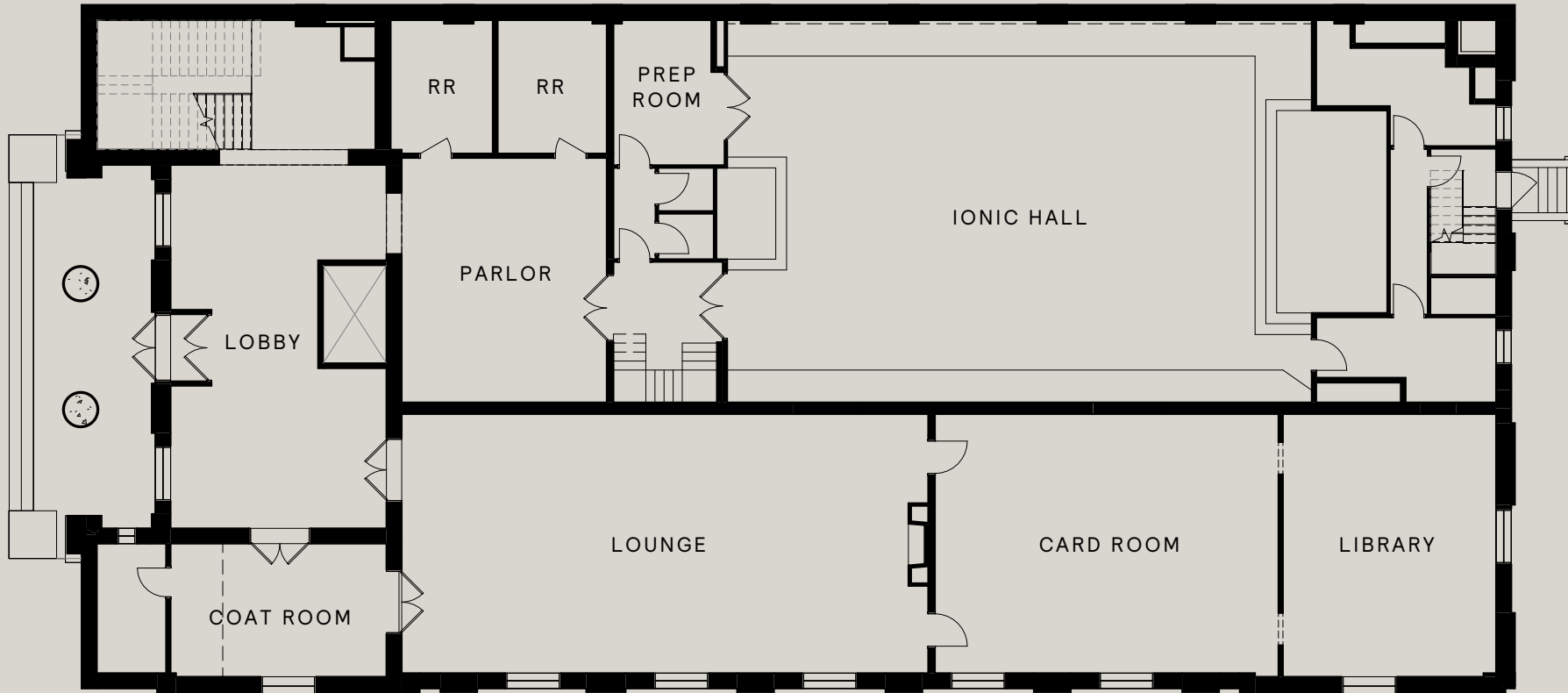
R2.ME



LOWER LEVEL - 8,939 SF



1453 MAPLE ST.



1ST FLOOR - 8,134 SF

1

1453 MAPLE ST.

R2 COMPANIES

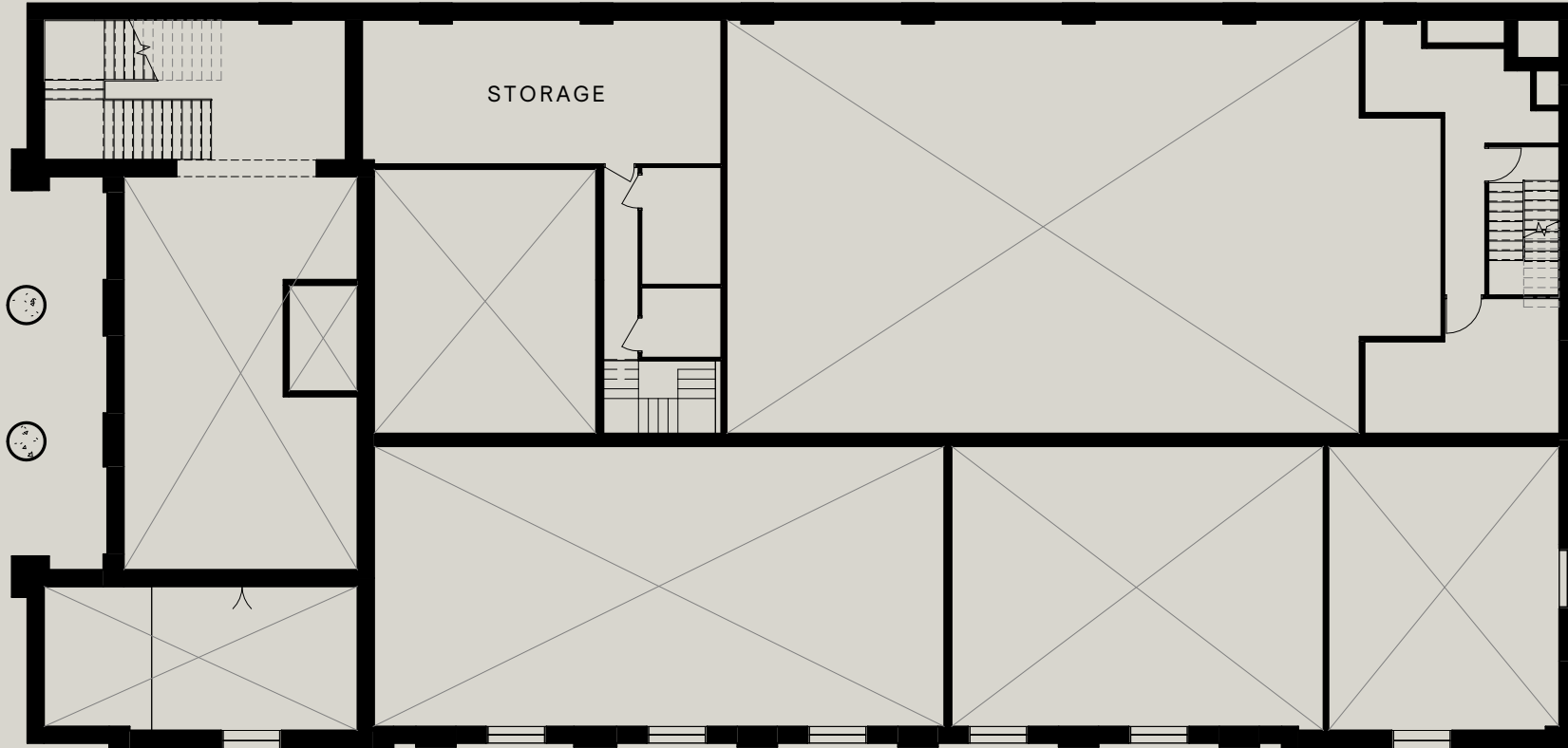
R2.ME

1ST FLOOR MEZZANINE - 1,301 SF

1.5

MATT DUHIG
+1 312 300 2374
MDUHIG@R2.ME

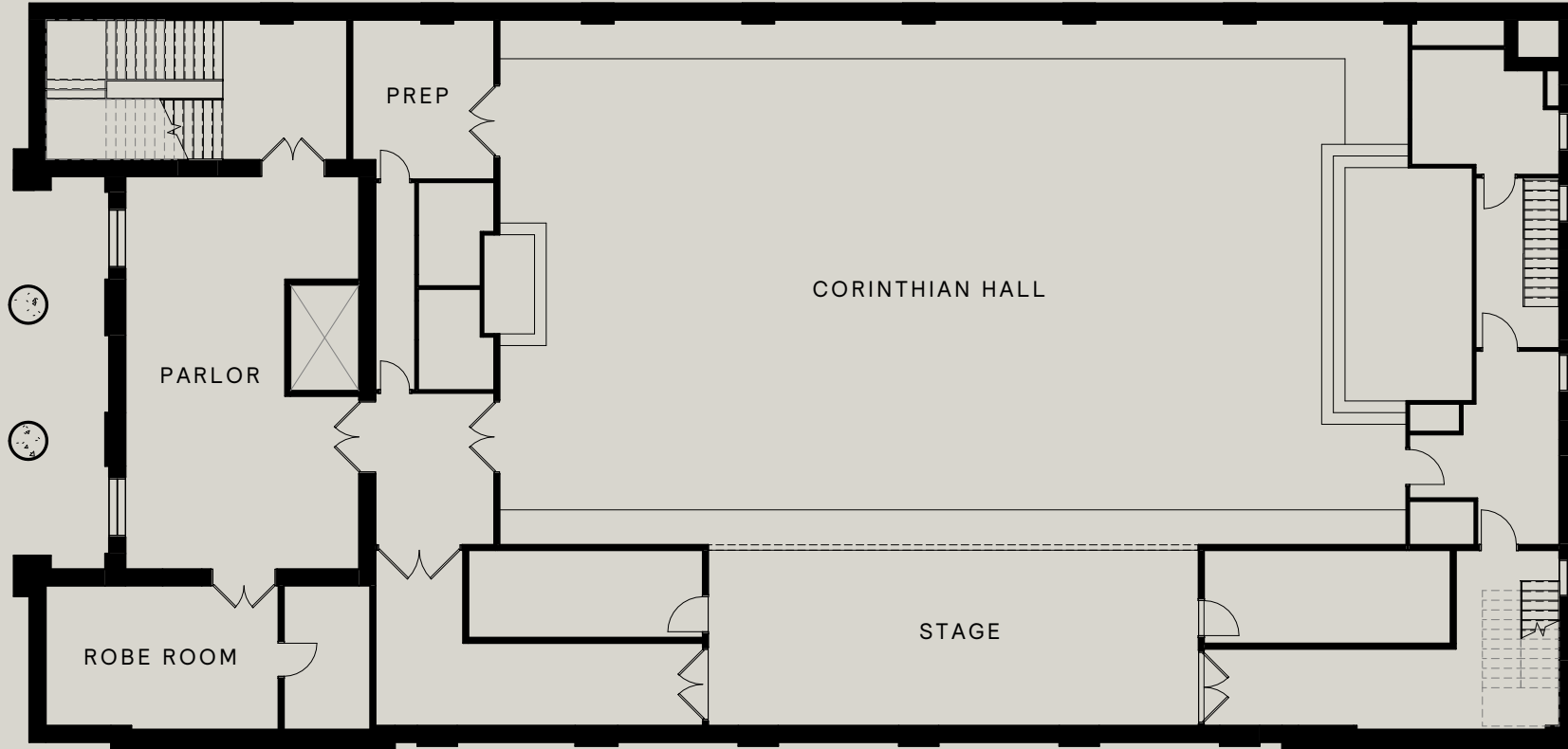
MATT PISTORIO
+1 312 728 3619
MPISTORIO@R2.ME



1453 MAPLE ST.

R2 COMPANIES

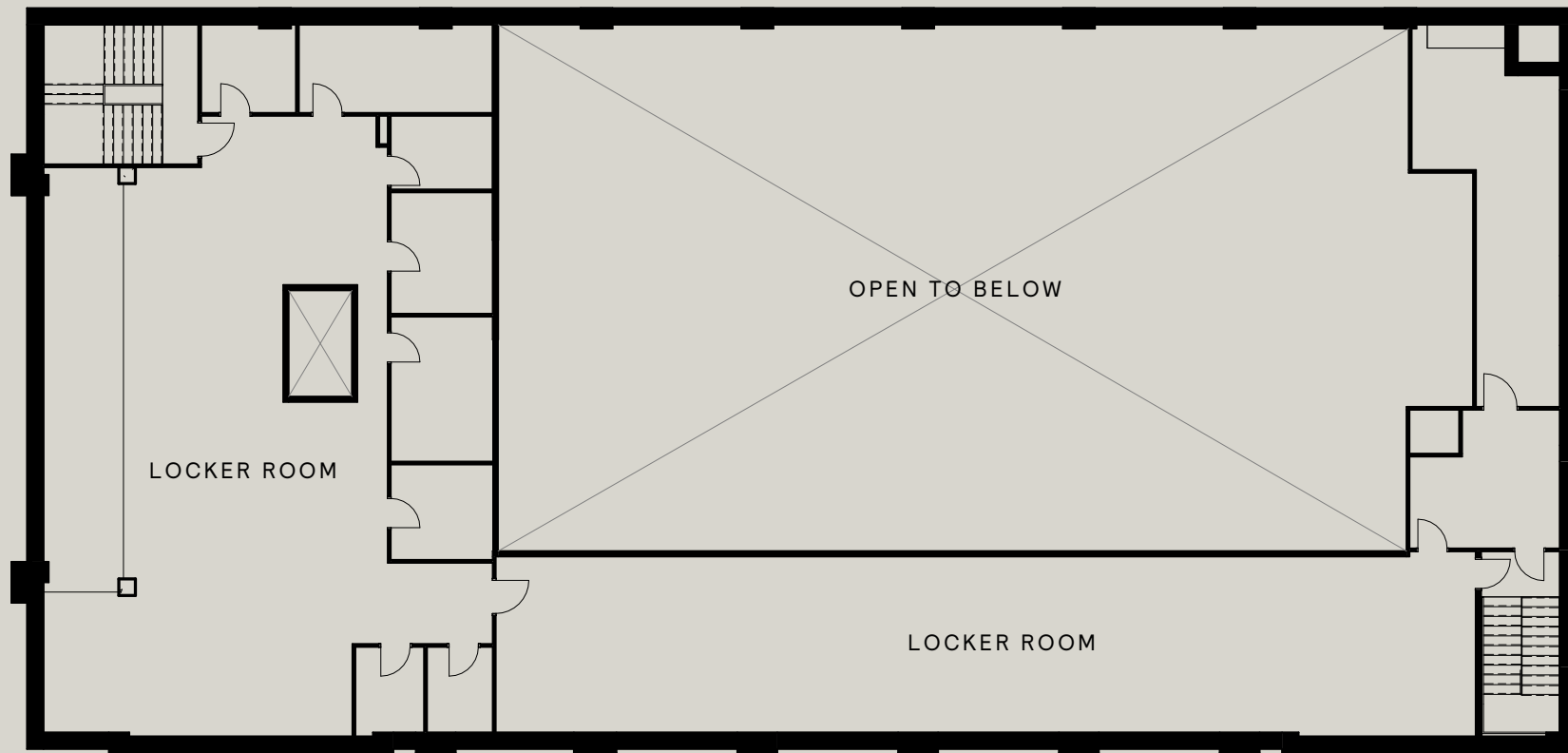
R2.ME



2ND FLOOR - 8,159 SF

2

1453 MAPLE ST.



2ND FLOOR MEZZANINE - 4,677 SF

2.5



—
1453 MAPLE ST.
Existing Conditions



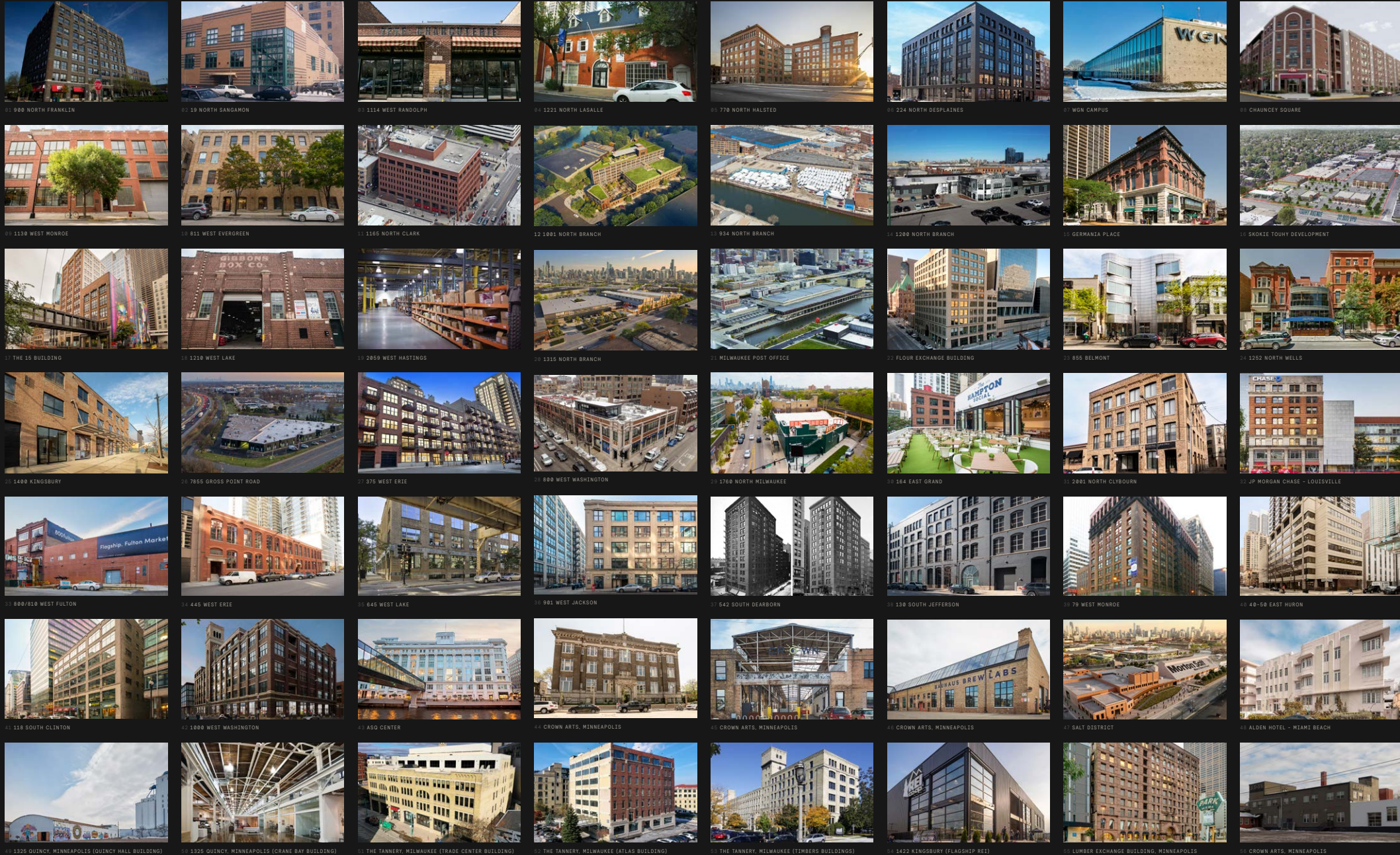
—
1453 MAPLE ST.
Existing Conditions



—
1453 MAPLE ST.
Existing Conditions



1453 MAPLE ST.
Existing Conditions



R2 Companies

BY THE NUMBERS

5.2M
Square Foot Portfolio

\$650M
Assets Under Management

+40 Assets
Currently Owned

3 Offices
Chicago, Milwaukee, Minneapolis

50+
R2 Operating Team

2007
Year Founded



LEASING
MATT DUHIG
+1 312 300 2374
MDUHIG@R2.ME

MATT PISTORIO
+1 312 728 3619
MPISTORIO@R2.ME

R2 COMPANIES
1200 N NORTH BRANCH ST
CHICAGO, IL 60642
R2.ME

R
2
COMPANIES