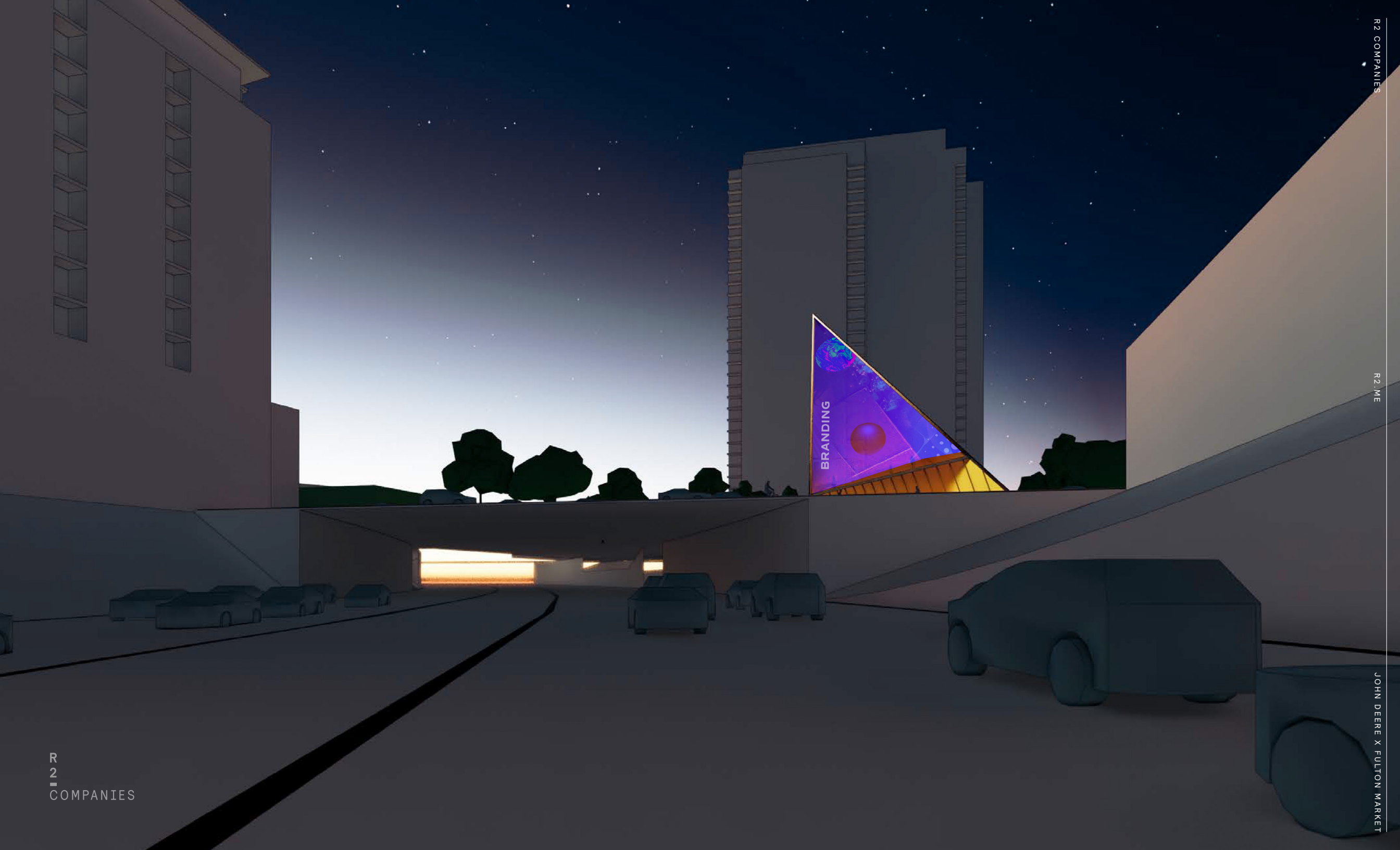


# 1.22 Acre Urban Outdoor Showroom

708 W WAYMAN. FULTON MARKET.



# 708

W WAYMAN

708 W WAYMAN STREET  
FULTON MARKET

- 1.22 ACRE / 53,000 SF LOT
- CUSTOMIZABLE WITH UP TO 15,000 SF STRUCTURE
- OUTDOOR SHOWROOM & GREENSPACE POTENTIAL
- 100+ PARKING SPACES AVAILABLE ONSITE
- UNPARALLELED SIGNAGE OPPORTUNITY
- VISIBLE TO 200,000+ CARS PER DAY ON EXPRESSWAY (100M+ ANNUALLY)



AVAILABLE SPACE  
1.22 ACRES

SIGNAGE



+200,000 VPD



HALSTED STREET

FULTON MARKET STREET

flexport.

WPP

convene

SLOAN



STUDIO

Aspen Dental



Knoll



WINTRUST

R2 COMPANIES



Google

ACE HOTEL

AVIARY

NEXT

Mondelēz International

WPP

K2

KUMAS CORNER

Aspen Dental

DUCK DUCK GOAT

BEATRIX

AVAILABLE SPACE  
1.22 ACRES

PUBLICAN



WEWORK

Knoll

RAMEN-SAN

MOMOTARO

THE FULTON PARK MARKET

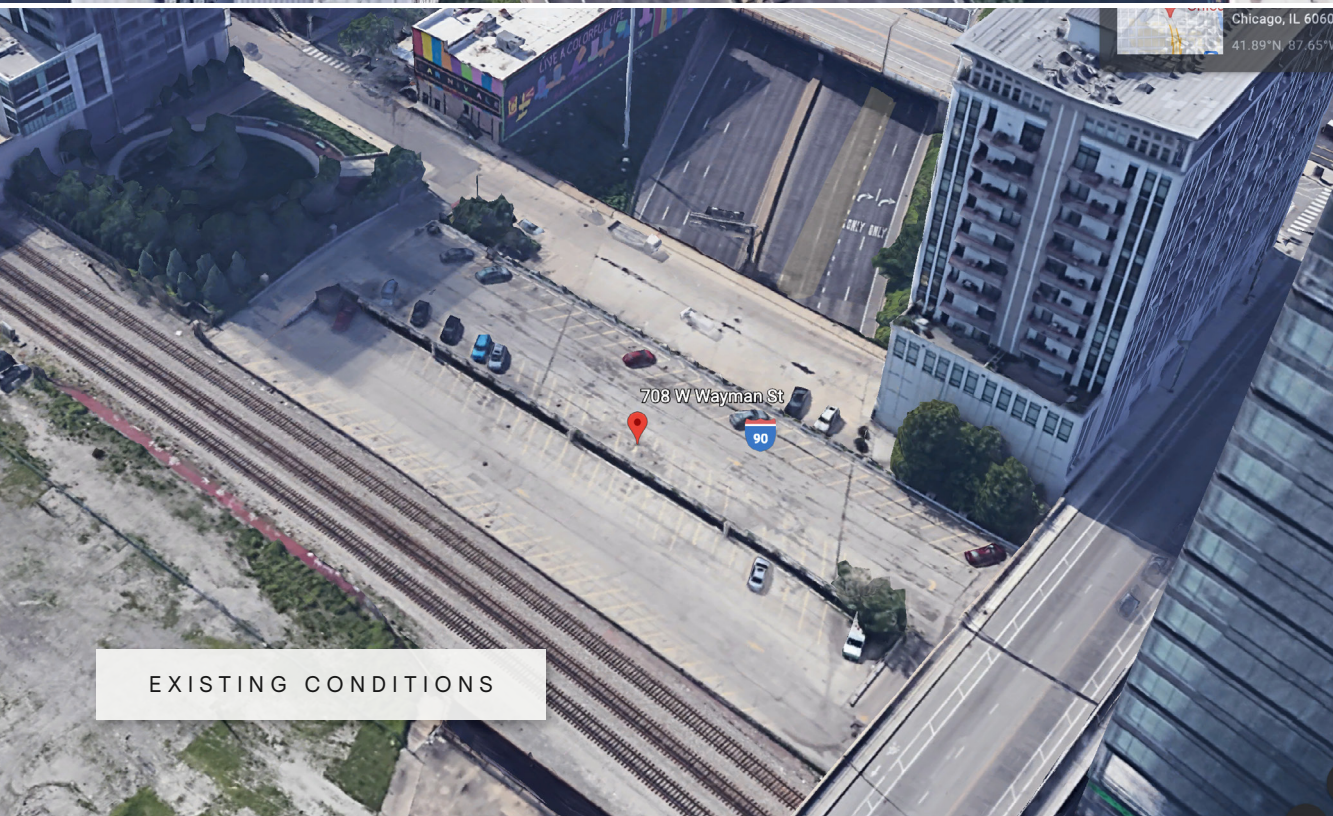
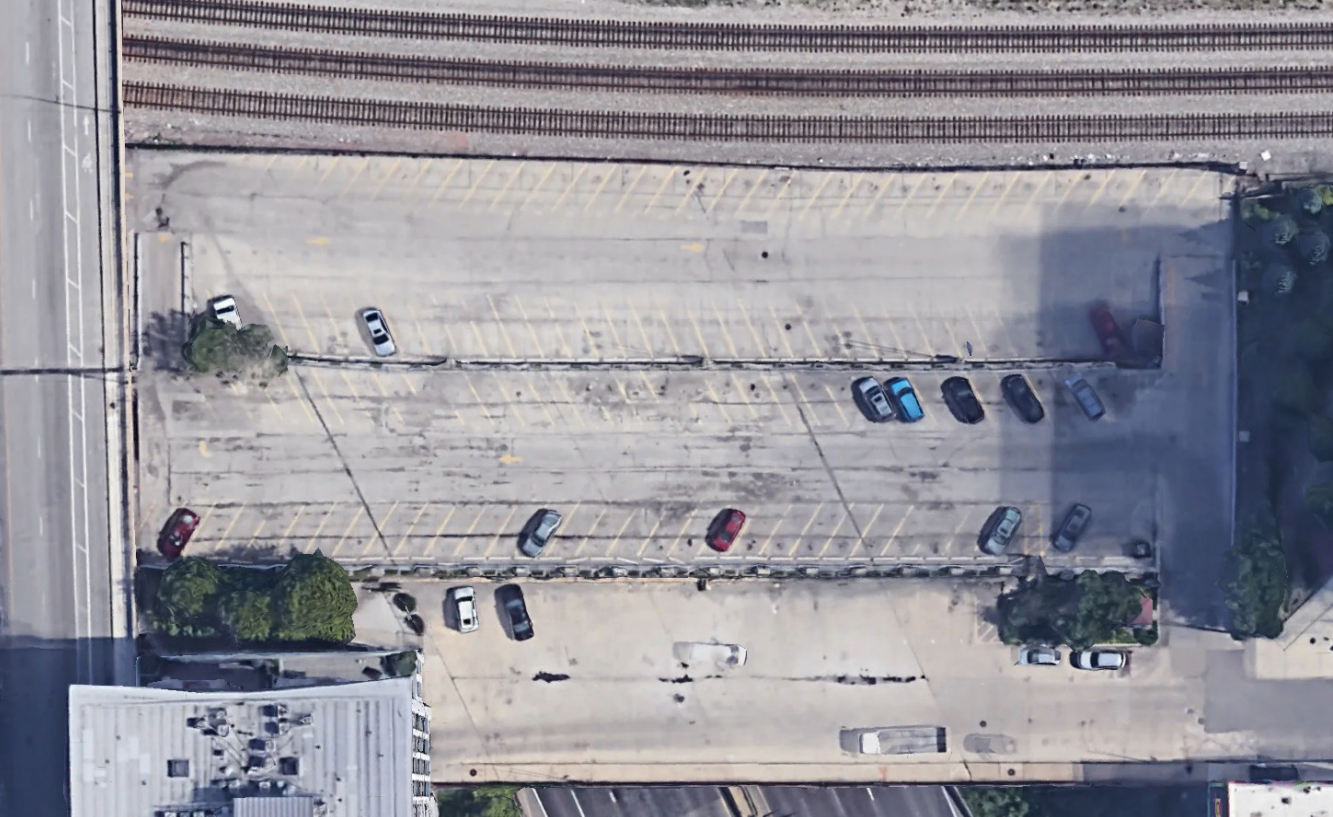


FULTON



COMPANIES

JOHN DEERE - JOHN DEERE MARKET



EXISTING CONDITIONS

# An Experiential Urban Showroom

## FULLY CUSTOMIZABLE

1.22 acres of highly visible land in Fulton Market available for mixed use. Programming opportunities are endless – including retail, public indoor + outdoor showrooms, greenspace, event space, educational labs & more.

## BRANDING + VISIBILITY

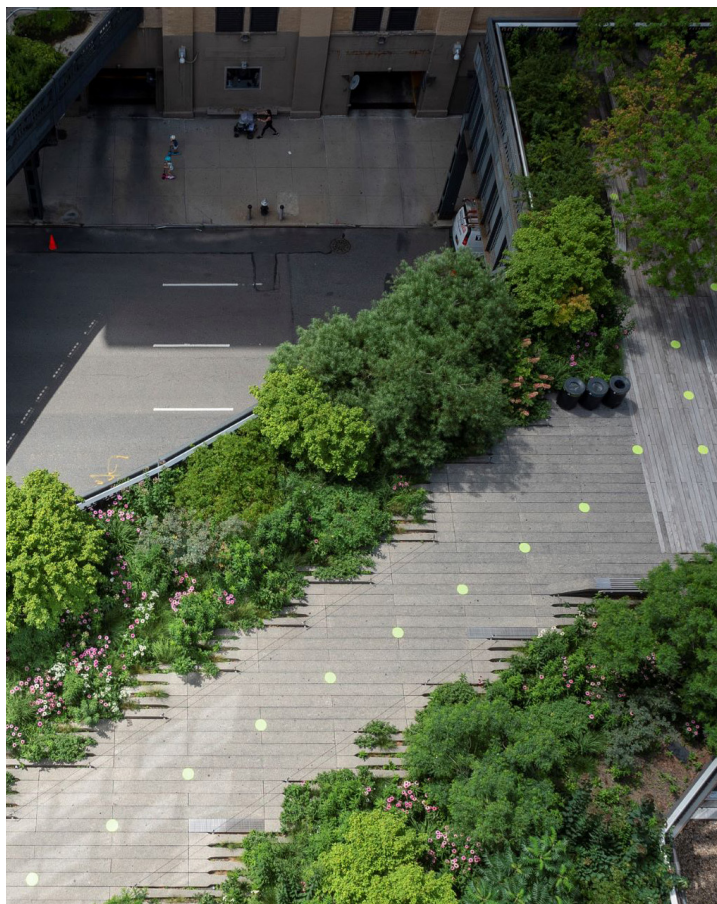
Memorialize your brand as one of the world's most innovative companies through a high visibility experiential urban showroom with I-90 facing signage.

## ONE-OF-A-KIND REAL ESTATE

Truly irreplaceable opportunity for a major brand presence in Fulton Market with 200,000+ person daily, 100+ Million annual visibility.

## PRACTICAL USAGE

Property also serves as a dedicated 100+ space employee and guest parking lot for adjacent Fulton Market office space.



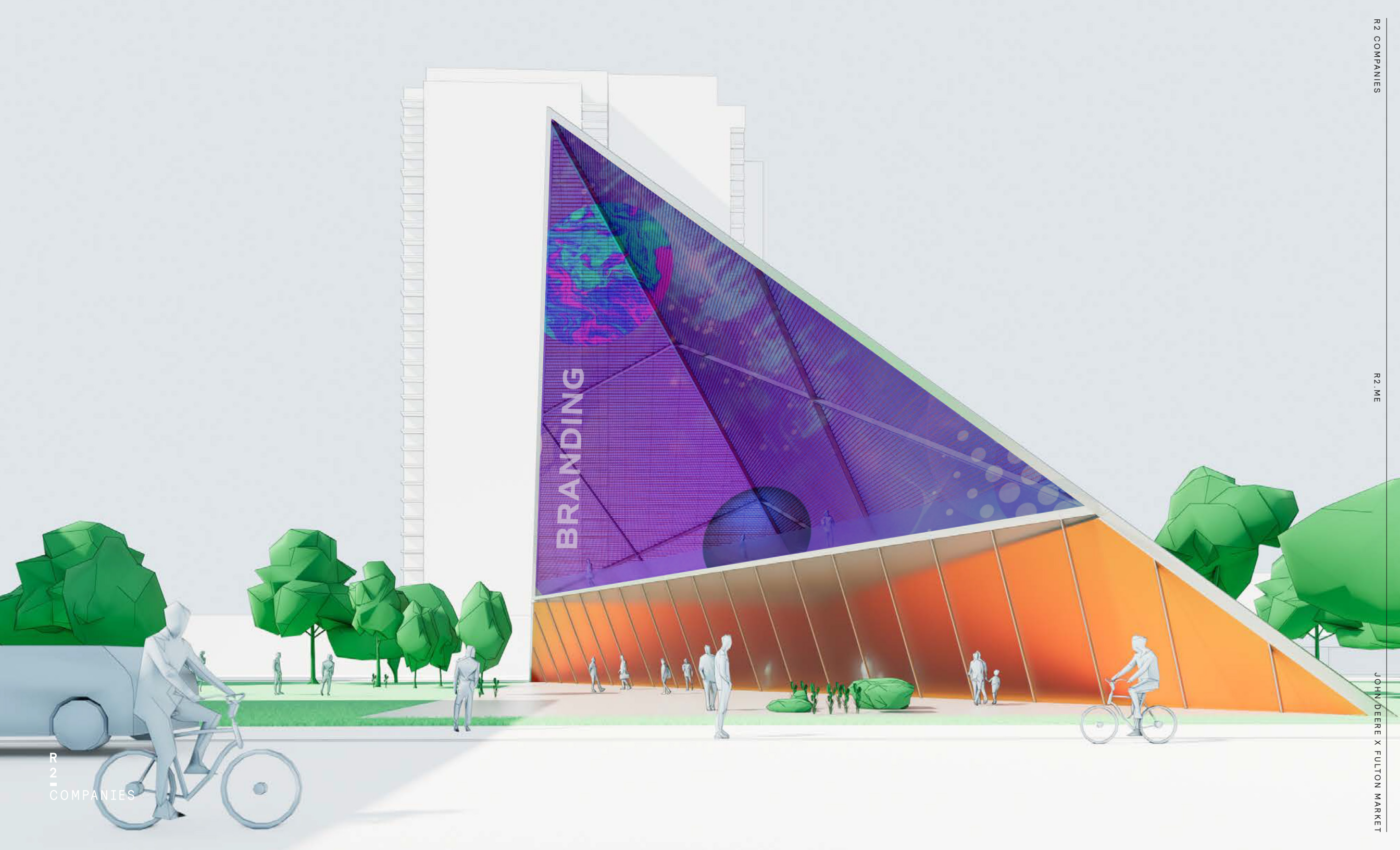
# Experiential Programming

INNOVATIVE BILLBOARD  
STRUCTURE + PAVILLION

OUTDOOR SHOWROOM

INDOOR/OUTDOOR  
EDUCATIONAL +  
EXPERIENTIAL SPACE

PUBLIC GREENSPACE





R  
2  
—